



# INTERNATIONAL GEMOLOGICAL INSTITUTE

## DIAMOND REPORT

October 8, 2025

IGI Report Number

737529195

Description

NATURAL DIAMOND

Shape and Cutting Style

ROUND BRILLIANT

Measurements

5.13 - 5.15 X 3.20 MM

### GRADING RESULTS

Carat Weight

0.52 CARAT

Color Grade

J

Clarity Grade

INTERNALLY FLAWLESS

Cut Grade

EXCELLENT

### ADDITIONAL GRADING INFORMATION

Polish

EXCELLENT

Symmetry

EXCELLENT

Fluorescence

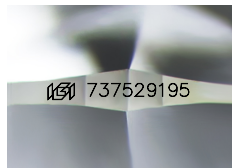
NONE

Inscription(s)

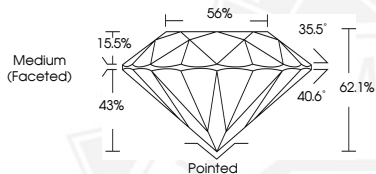
IGI 737529195

Comments: IDEAL CUT ROUND BRILLIANT

ELECTRONIC COPY



Sample Image Used



October 8, 2025

IGI Report Number 737529195

ROUND BRILLIANT

NATURAL DIAMOND

5.13 - 5.15 X 3.20 MM

Carat Weight 0.52 CARAT

Color Grade J

Clarity Grade I.F.

Cut Grade EXCELLENT

Polish EXCELLENT

Symmetry EXCELLENT

Fluorescence NONE

Inscription(s) IGI 737529195

Comments: IDEAL CUT ROUND

BRILLIANT



October 8, 2025

IGI Report Number 737529195

ROUND BRILLIANT

NATURAL DIAMOND

5.13 - 5.15 X 3.20 MM

Carat Weight 0.52 CARAT

Color Grade J

Clarity Grade I.F.

Cut Grade EXCELLENT

Polish EXCELLENT

Symmetry EXCELLENT

Fluorescence NONE

Inscription(s) IGI 737529195

Comments: IDEAL CUT ROUND

BRILLIANT



THIS DOCUMENT WAS PRODUCED WITH THE FOLLOWING SECURITY MEASURES: SPECIAL DOCUMENT PAPER, INK SCREENS, WATERMARK, BACKGROUND DESIGNS, HOLOGRAM AND OTHER SECURITY FEATURES NOT LISTED AND DO EXCEED DOCUMENT SECURITY INDUSTRY GUIDELINES.

For terms & conditions and to verify this report, please visit [www.igi.org](http://www.igi.org)