



# INTERNATIONAL GEMOLOGICAL INSTITUTE

ELECTRONIC COPY

## DIAMOND REPORT

October 8, 2025  
IGI Report Number  
Description  
Shape and Cutting Style  
Measurements

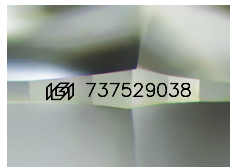
737529038  
NATURAL DIAMOND  
ROUND BRILLIANT  
5.98 - 6.01 X 3.64 MM

## GRADING RESULTS

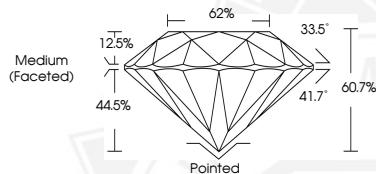
Carat Weight 0.80 CARAT  
Color Grade J  
Clarity Grade SI 1  
Cut Grade EXCELLENT

## ADDITIONAL GRADING INFORMATION

Polish EXCELLENT  
Symmetry EXCELLENT  
Fluorescence NONE  
Identification Features CRYSTAL, FEATHER, CAVITY  
Inscription(s) (IGI) 737529038



Sample Image Used



THIS DOCUMENT WAS PRODUCED WITH THE FOLLOWING SECURITY MEASURES: SPECIAL DOCUMENT PAPER, INK SCREENS, WATERMARK, BACKGROUND DESIGNS, HOLOGRAM AND OTHER SECURITY FEATURES NOT LISTED AND DO EXCEED DOCUMENT SECURITY INDUSTRY GUIDELINES.

For terms & conditions and to verify this report, please visit [www.igi.org](http://www.igi.org)



October 8, 2025

IGI Report Number 737529038

ROUND BRILLIANT

NATURAL DIAMOND

5.98 - 6.01 X 3.64 MM

Carat Weight 0.80 CARAT

Color Grade J

Clarity Grade SI 1

Cut Grade EXCELLENT

Polish EXCELLENT

Symmetry EXCELLENT

Fluorescence NONE

Inscription(s) (IGI) 737529038



October 8, 2025

IGI Report Number 737529038

ROUND BRILLIANT

NATURAL DIAMOND

5.98 - 6.01 X 3.64 MM

Carat Weight 0.80 CARAT

Color Grade J

Clarity Grade SI 1

Cut Grade EXCELLENT

Polish EXCELLENT

Symmetry EXCELLENT

Fluorescence NONE

Inscription(s) (IGI) 737529038