



ELECTRONIC COPY

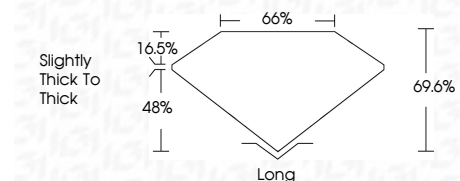
737520605
Report verification at igi.org



October 9, 2025
IGI Report Number **737520605**
Description **NATURAL DIAMOND**
Shape and Cutting Style **EMERALD CUT**
Measurements **7.44 X 5.39 X 3.75 MM**

GRADING RESULTS

Carat Weight **1.52 CARAT**
Color Grade **H**
Clarity Grade **VVS 2**
Cut Grade **VERY GOOD**



ADDITIONAL GRADING INFORMATION

Polish **EXCELLENT**
Symmetry **EXCELLENT**
Fluorescence **NONE**
Inscription(s) **(IGI) 737520605**



IGI

October 9, 2025
IGI Report No 737520605
EMERALD CUT
7.44 X 5.39 X 3.75 MM
Carat Weight **1.52 CARAT**
Color Grade **H**
Clarity Grade **VVS 2**
Cut Grade **VERY GOOD**
Depth **48%**
Table **16.5%**
Girdle **66%**
Slightly Thick to Thick
Culet **Long**
Polish **EXCELLENT**
Symmetry **EXCELLENT**
Fluorescence **NONE**
Inscription(s) **(IGI) 737520605**

DIAMOND REPORT

October 9, 2025
IGI Report Number **737520605**
Description **NATURAL DIAMOND**
Shape and Cutting Style **EMERALD CUT**
Measurements **7.44 X 5.39 X 3.75 MM**

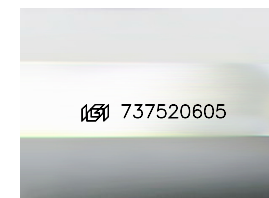
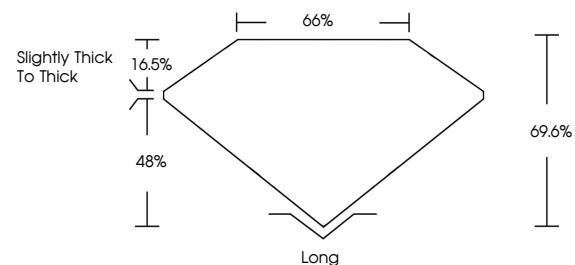
GRADING RESULTS

Carat Weight **1.52 CARAT**
Color Grade **H**
Clarity Grade **VVS 2**
Cut Grade **VERY GOOD**

ADDITIONAL GRADING INFORMATION

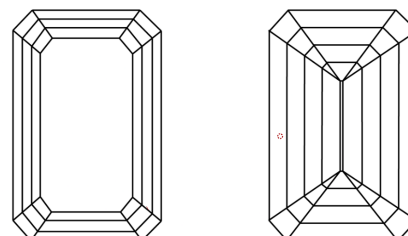
Polish **EXCELLENT**
Symmetry **EXCELLENT**
Fluorescence **NONE**
Inscription(s) **(IGI) 737520605**

PROPORTIONS



Sample Image Used

CLARITY CHARACTERISTICS



KEY TO SYMBOLS

Red symbols indicate internal characteristics.
Green symbols indicate external characteristics.

COLOR

D - F	G - J	K - M	N - R	S - Z	FANCY
Colorless	Near Colorless	Slightly Tinted	Very Light Color	Light Color	

CLARITY

IF	VVS ¹⁻²	VS ¹⁻²	SI ¹⁻²	I ¹⁻³
Internally Flawless	Very Very Slightly Included	Very Slightly Included	Slightly Included	Included

