



INTERNATIONAL GEMOLOGICAL INSTITUTE

ELECTRONIC COPY

DIAMOND REPORT

October 1, 2025
IGI Report Number
Description
Shape and Cutting Style
Measurements

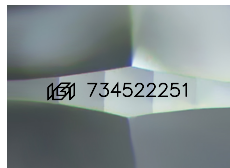
734522251
NATURAL DIAMOND
ROUND BRILLIANT
4.87 - 4.89 X 3.08 MM

GRADING RESULTS

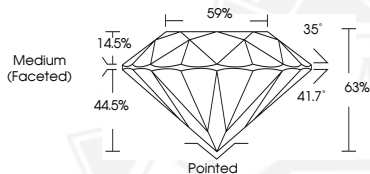
Carat Weight 0.45 CARAT
Color Grade K
Clarity Grade VVS 2
Cut Grade EXCELLENT

ADDITIONAL GRADING INFORMATION

Polish EXCELLENT
Symmetry EXCELLENT
Fluorescence NONE
Identification Features FEATHER, PINPOINT
Inscription(s) (IGI) 734522251



Sample Image Used



October 1, 2025
IGI Report Number 734522251
ROUND BRILLIANT
NATURAL DIAMOND
4.87 - 4.89 X 3.08 MM
Carat Weight 0.45 CARAT
Color Grade K
Clarity Grade VVS 2
Cut Grade EXCELLENT
Polish EXCELLENT
Symmetry EXCELLENT
Fluorescence NONE
Inscription(s) (IGI) 734522251



October 1, 2025
IGI Report Number 734522251
ROUND BRILLIANT
NATURAL DIAMOND
4.87 - 4.89 X 3.08 MM
Carat Weight 0.45 CARAT
Color Grade K
Clarity Grade VVS 2
Cut Grade EXCELLENT
Polish EXCELLENT
Symmetry EXCELLENT
Fluorescence NONE
Inscription(s) (IGI) 734522251



THIS DOCUMENT WAS PRODUCED WITH THE FOLLOWING SECURITY MEASURES: SPECIAL DOCUMENT PAPER, INK SCREENS, WATERMARK, BACKGROUND DESIGNS, HOLOGRAM AND OTHER SECURITY FEATURES NOT LISTED AND DO EXCEED DOCUMENT SECURITY INDUSTRY GUIDELINES.

For terms & conditions and to verify this report, please visit www.igi.org