



INTERNATIONAL GEMOLOGICAL INSTITUTE

ELECTRONIC COPY

DIAMOND REPORT

October 8, 2025

IGI Report Number

734510751

Description

NATURAL DIAMOND

Shape and Cutting Style

ROUND BRILLIANT

Measurements

4.68 - 4.70 X 2.92 MM

GRADING RESULTS

Carat Weight

0.40 CARAT

Color Grade

K

Clarity Grade

VS 1

Cut Grade

EXCELLENT

ADDITIONAL GRADING INFORMATION

Polish

EXCELLENT

Symmetry

EXCELLENT

Fluorescence

VERY SLIGHT

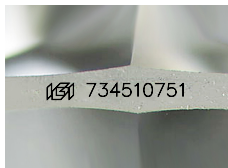
Identification Features

FEATHER

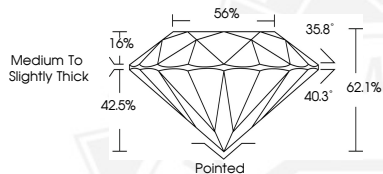
Inscription(s)

IGI 734510751

Comments: IDEAL CUT ROUND BRILLIANT



Sample Image Used



October 8, 2025

IGI Report Number 734510751

ROUND BRILLIANT

NATURAL DIAMOND

4.68 - 4.70 X 2.92 MM

Carat Weight 0.40 CARAT

Color Grade K

Clarity Grade VS 1

Cut Grade EXCELLENT

Polish EXCELLENT

Symmetry EXCELLENT

Fluorescence VERY SLIGHT

Inscription(s) IGI 734510751

Comments: IDEAL CUT ROUND

BRILLIANT



October 8, 2025

IGI Report Number 734510751

ROUND BRILLIANT

NATURAL DIAMOND

4.68 - 4.70 X 2.92 MM

Carat Weight 0.40 CARAT

Color Grade K

Clarity Grade VS 1

Cut Grade EXCELLENT

Polish EXCELLENT

Symmetry EXCELLENT

Fluorescence VERY SLIGHT

Inscription(s) IGI 734510751

Comments: IDEAL CUT ROUND

BRILLIANT



THIS DOCUMENT WAS PRODUCED WITH THE FOLLOWING SECURITY MEASURES: SPECIAL DOCUMENT PAPER, INK SCREENS, WATERMARK, BACKGROUND DESIGNS, HOLOGRAM AND OTHER SECURITY FEATURES NOT LISTED AND DO EXCEED DOCUMENT SECURITY INDUSTRY GUIDELINES.

For terms & conditions and to verify this report, please visit www.igi.org