



INTERNATIONAL GEMOLOGICAL INSTITUTE

ELECTRONIC COPY

DIAMOND REPORT

October 6, 2025

IGI Report Number

734509835

Description

NATURAL DIAMOND

Shape and Cutting Style

ROUND BRILLIANT

Measurements

4.74 - 4.76 X 2.88 MM

GRADING RESULTS

Carat Weight

0.40 CARAT

Color Grade

K

Clarity Grade

VS 2

Cut Grade

EXCELLENT

ADDITIONAL GRADING INFORMATION

Polish

EXCELLENT

Symmetry

EXCELLENT

Fluorescence

SLIGHT

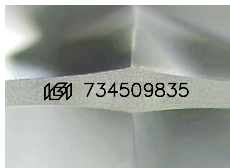
Identification Features

FEATHER

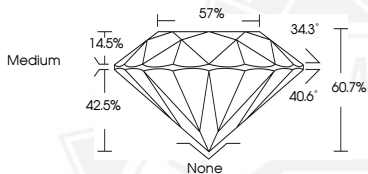
Inscription(s)

IGI 734509835

Comments: IDEAL CUT ROUND BRILLIANT



Sample Image Used



October 6, 2025

IGI Report Number 734509835

ROUND BRILLIANT

NATURAL DIAMOND

4.74 - 4.76 X 2.88 MM

Carat Weight 0.40 CARAT

Color Grade K

Clarity Grade VS 2

Cut Grade EXCELLENT

Polish EXCELLENT

Symmetry EXCELLENT

Fluorescence SLIGHT

Inscription(s) IGI 734509835

Comments: IDEAL CUT ROUND

BRILLIANT



October 6, 2025

IGI Report Number 734509835

ROUND BRILLIANT

NATURAL DIAMOND

4.74 - 4.76 X 2.88 MM

Carat Weight 0.40 CARAT

Color Grade K

Clarity Grade VS 2

Cut Grade EXCELLENT

Polish EXCELLENT

Symmetry EXCELLENT

Fluorescence SLIGHT

Inscription(s) IGI 734509835

Comments: IDEAL CUT ROUND

BRILLIANT



THIS DOCUMENT WAS PRODUCED WITH THE FOLLOWING SECURITY MEASURES: SPECIAL DOCUMENT PAPER, INK SCREENS, WATERMARK, BACKGROUND DESIGNS, HOLOGRAM AND OTHER SECURITY FEATURES NOT LISTED AND DO EXCEED DOCUMENT SECURITY INDUSTRY GUIDELINES.

For terms & conditions and to verify this report, please visit www.igi.org