



DIAMOND REPORT

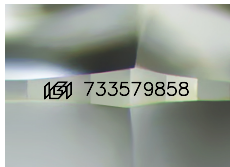
February 26, 2026
 IGI Report Number **733579858**
 Description **NATURAL DIAMOND**
 Shape and Cutting Style **ROUND BRILLIANT**
 Measurements **5.13 - 5.15 X 3.17 MM**

GRADING RESULTS

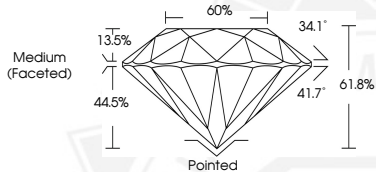
Carat Weight **0.51 CARAT**
 Color Grade **J**
 Clarity Grade **VS 2**
 Cut Grade **EXCELLENT**

ADDITIONAL GRADING INFORMATION

Polish **EXCELLENT**
 Symmetry **EXCELLENT**
 Fluorescence **NONE**
 Identification Features **CRYSTAL, FEATHER, CAVITY**
 Inscription(s) **IGI 733579858**



Sample Image Used



February 26, 2026

IGI Report Number **733579858**

**ROUND BRILLIANT
 NATURAL DIAMOND
 5.13 - 5.15 X 3.17 MM**

Carat Weight **0.51 CARAT**
 Color Grade **J**
 Clarity Grade **VS 2**
 Cut Grade **EXCELLENT**
 Polish **EXCELLENT**
 Symmetry **EXCELLENT**
 Fluorescence **NONE**
 Inscription(s) **IGI 733579858**



February 26, 2026

IGI Report Number **733579858**

**ROUND BRILLIANT
 NATURAL DIAMOND
 5.13 - 5.15 X 3.17 MM**

Carat Weight **0.51 CARAT**
 Color Grade **J**
 Clarity Grade **VS 2**
 Cut Grade **EXCELLENT**
 Polish **EXCELLENT**
 Symmetry **EXCELLENT**
 Fluorescence **NONE**
 Inscription(s) **IGI 733579858**



THIS DOCUMENT WAS PRODUCED WITH THE FOLLOWING SECURITY MEASURES: SPECIAL DOCUMENT PAPER, INK SCREENS, WATERMARK, BACKGROUND DESIGNS, HOLOGRAM AND OTHER SECURITY FEATURES NOT LISTED AND DO EXCEED DOCUMENT SECURITY INDUSTRY GUIDELINES.