



# INTERNATIONAL GEMOLOGICAL INSTITUTE

ELECTRONIC COPY

## DIAMOND REPORT

January 2, 2026

IGI Report Number

733579109

Description

NATURAL DIAMOND

Shape and Cutting Style

ROUND BRILLIANT

Measurements

5.16 - 5.19 X 3.13 MM

### GRADING RESULTS

Carat Weight

0.51 CARAT

Color Grade

I

Clarity Grade

VS 1

Cut Grade

EXCELLENT

### ADDITIONAL GRADING INFORMATION

Polish

EXCELLENT

Symmetry

EXCELLENT

Fluorescence

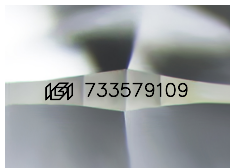
NONE

Identification Features

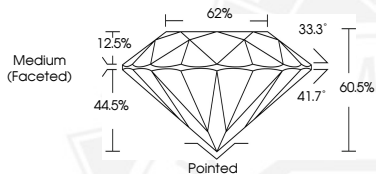
ETCH CHANNEL

Inscription(s)

733579109



Sample Image Used



January 2, 2026

IGI Report Number 733579109

ROUND BRILLIANT

NATURAL DIAMOND

5.16 - 5.19 X 3.13 MM

Carat Weight 0.51 CARAT

Color Grade I

Clarity Grade VS 1

Cut Grade EXCELLENT

Polish EXCELLENT

Symmetry EXCELLENT

Fluorescence NONE

Inscription(s) 733579109



January 2, 2026

IGI Report Number 733579109

ROUND BRILLIANT

NATURAL DIAMOND

5.16 - 5.19 X 3.13 MM

Carat Weight 0.51 CARAT

Color Grade I

Clarity Grade VS 1

Cut Grade EXCELLENT

Polish EXCELLENT

Symmetry EXCELLENT

Fluorescence NONE

Inscription(s) 733579109



THIS DOCUMENT WAS PRODUCED WITH THE FOLLOWING SECURITY MEASURES: SPECIAL DOCUMENT PAPER, INK SCREENS, WATERMARK, BACKGROUND DESIGNS, HOLOGRAM AND OTHER SECURITY FEATURES NOT LISTED AND DO EXCEED DOCUMENT SECURITY INDUSTRY GUIDELINES.

For terms & conditions and to verify this report, please visit [www.igi.org](http://www.igi.org)