



**ELECTRONIC COPY**

## DIAMOND REPORT

November 10, 2025	
IGI Report Number	733569127
Description	NATURAL DIAMOND
Shape and Cutting Style	ROUND BRILLIANT
Measurements	7.20 - 7.27 X 4.55 MM

## GRADING RESULTS

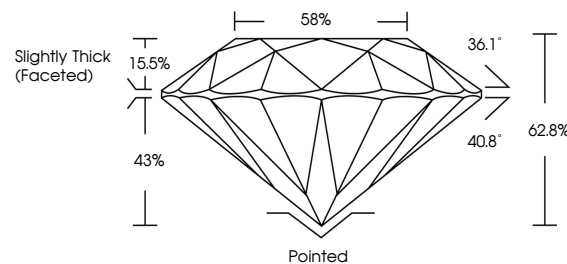
Carat Weight	1.50 CARAT
Color Grade	I
Clarity Grade	VVS 2
Cut Grade	EXCELLENT

### ADDITIONAL GRADING INFORMATION

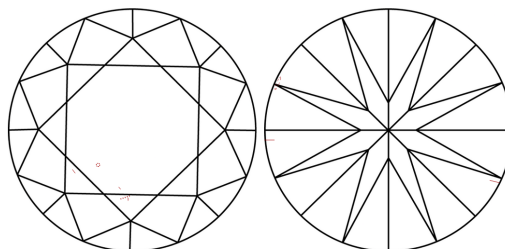
Polish	EXCELLENT
Symmetry	EXCELLENT
Fluorescence	NONE
Inscription(s)	131 733569127

733569127  
Report verification at [igi.org](http://igi.org)

## PROPORTIONS

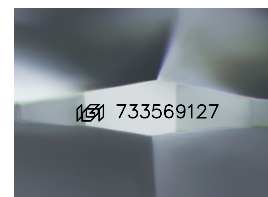


## CLARITY CHARACTERISTICS



## KEY TO SYMBOLS

Red symbols indicate internal characteristics.  
Green symbols indicate external characteristics.



Sample Image Used

**COLOR**

D - F	G - J	K - M	N - R	S - Z	FANCY
Colorless	Near Colorless	Slightly Tinted	Very Light Color	Light Color	

## CLARITY

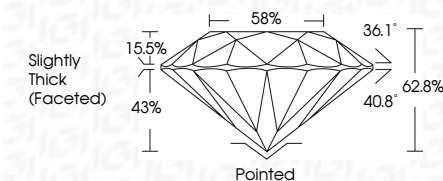
IF	VVS <sup>1-2</sup>	VS <sup>1-2</sup>	SI <sup>1-2</sup>	I <sup>1-3</sup>
Internally Flawless	Very Very Slightly Included	Very Slightly Included	Slightly Included	Included



November 10, 2025	
IGI Report Number	733569127
Description	NATURAL DIAMOND
Shape and Cutting Style	ROUND BRILLIANT
Measurements	7.20 - 7.27 X 4.55 MM

## GRADING RESULTS

Carat Weight	1.50 CARAT
Color Grade	I
Clarity Grade	VVS 2
Cut Grade	EXCELLENT



### ADDITIONAL GRADING INFORMATION

Polish	EXCELLENT
Symmetry	EXCELLENT
Fluorescence	NONE
Inscription(s)	(15) 733569127



© IGI 2020, International Gemological Institute

FD - 10 20



THIS DOCUMENT WAS PRODUCED WITH THE FOLLOWING SECURITY MEASURES: SPECIAL DOCUMENT PAPER, INK SCREENS, WATERMARK, BACKGROUND DESIGNS, HOLOGRAM AND OTHER SECURITY FEATURES NOT LISTED AND DO EXCEED DOCUMENT SECURITY INDUSTRY GUIDELINES

November 10, 2025  
IGI Report No 733569127  
ROUND BRILLIANT

ROUND BRILLIANT		1.50 CARAT	
7.92 - 7.27 X 4.55 MM		VS 2	
Carat Weight		EXCELLENT	
Color Grade		62.8%	
Clarity Grade		58%	
Cut Grade		SLIGHTLY THICK (FACEUP)	
Depth			
Table			
Girdle			

Culet	Pointed
Polish	EXCELLENT
Symmetry	EXCELLENT
Fluorescence	NONE
Identification(s)	458 793540127