



ELECTRONIC COPY

DIAMOND REPORT

| | |
|-------------------------|-----------------------|
| November 8, 2025 | |
| IGI Report Number | 733569111 |
| Description | NATURAL DIAMOND |
| Shape and Cutting Style | ROUND BRILLIANT |
| Measurements | 6.27 - 6.31 X 3.98 MM |

GRADING RESULTS

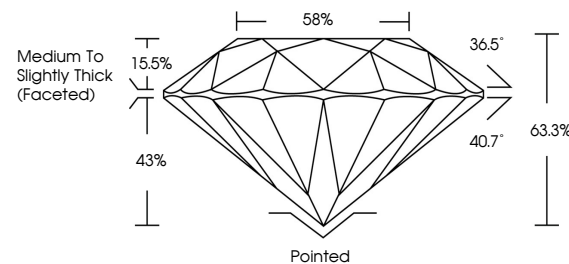
| | |
|---------------|------------|
| Carat Weight | 1.00 CARAT |
| Color Grade | H |
| Clarity Grade | VVS 1 |
| Cut Grade | EXCELLENT |

ADDITIONAL GRADING INFORMATION

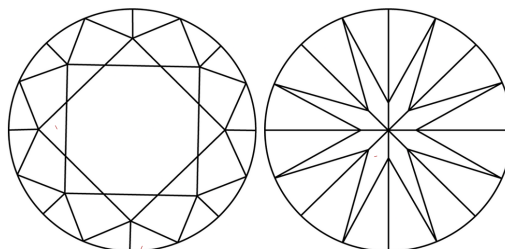
| | |
|----------------|---------------|
| Polish | EXCELLENT |
| Symmetry | EXCELLENT |
| Fluorescence | VERY SLIGHT |
| Inscription(s) | 151 733569111 |

733569111
Report verification at igi.org

PROPORTIONS

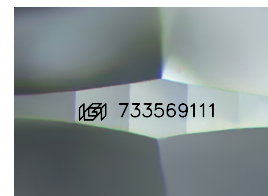


CLARITY CHARACTERISTICS



KEY TO SYMBOLS

Red symbols indicate internal characteristics.
Green symbols indicate external characteristics.



Sample Image Used

COLOR

| D - F | G - J | K - M | N - R | S - Z | FANCY |
|-----------|----------------|-----------------|------------------|-------------|-------|
| Colorless | Near Colorless | Slightly Tinted | Very Light Color | Light Color | |

CLARITY

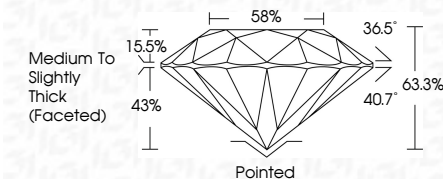
| IF | VVS ¹⁻² | VS ¹⁻² | SI ¹⁻² | I ¹⁻³ |
|---------------------|-----------------------------|------------------------|-------------------|------------------|
| Internally Flawless | Very Very Slightly Included | Very Slightly Included | Slightly Included | Included |



| | |
|-------------------------|-----------------------|
| November 8, 2025 | |
| IGI Report Number | 733569111 |
| Description | NATURAL DIAMOND |
| Shape and Cutting Style | ROUND BRILLIANT |
| Measurements | 6.27 - 6.31 X 3.98 MM |

GRADING RESULTS

| | |
|---------------|------------|
| Carat Weight | 1.00 CARAT |
| Color Grade | H |
| Clarity Grade | VVS 1 |
| Cut Grade | EXCELLENT |



ADDITIONAL GRADING INFORMATION

| | |
|----------------|--------------|
| Polish | EXCELLENT |
| Symmetry | EXCELLENT |
| Fluorescence | VERY SLIGHT |
| Inscription(s) | (5) 73356911 |



© IGI 2020, International Gemological Institute

FD - 10 20



THIS DOCUMENT WAS PRODUCED WITH THE FOLLOWING SECURITY MEASURES: SPECIAL DOCUMENT PAPER, INK SCREENS, WATERMARK, BACKGROUND DESIGNS, HOLOGRAM AND OTHER SECURITY FEATURES NOT LISTED AND DO EXCEED DOCUMENT SECURITY INDUSTRY GUIDELINE

www.igi.org

November 8, 2025
GI Report No 733569111
ROUND BRILLIANT

| | | | | | | | | | | | | |
|------------|-----|-----------|-------|-----|------------------------------------|---------|-----------|----------|-----------|--------------|-------------|----------------|
| 1.00 CARAT | VS1 | EXCELLENT | 66.3% | 59% | Medium to Slightly Thick (Faceted) | Pointed | EXCELLENT | Symmetry | EXCELLENT | Fluorescence | VERY SLIGHT | near 735/591nm |
| 1.00 CARAT | VS1 | EXCELLENT | 66.3% | 59% | Medium to Slightly Thick (Faceted) | Pointed | EXCELLENT | Symmetry | EXCELLENT | Fluorescence | VERY SLIGHT | near 735/591nm |