



# INTERNATIONAL GEMOLOGICAL INSTITUTE

ELECTRONIC COPY

## DIAMOND REPORT

October 1, 2025

IGI Report Number

733561161

Description

NATURAL DIAMOND

Shape and Cutting Style

ROUND BRILLIANT

Measurements

4.56 - 4.59 X 2.88 MM

### GRADING RESULTS

Carat Weight

0.37 CARAT

Color Grade

H

Clarity Grade

VS 2

Cut Grade

EXCELLENT

### ADDITIONAL GRADING INFORMATION

Polish

EXCELLENT

Symmetry

EXCELLENT

Fluorescence

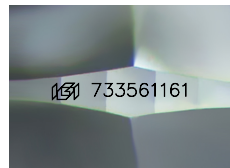
NONE

Identification Features

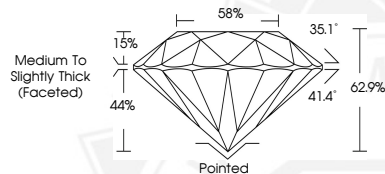
CRYSTAL CLOUD

Inscription(s)

733561161



Sample Image Used



October 1, 2025

IGI Report Number 733561161

ROUND BRILLIANT

NATURAL DIAMOND

4.56 - 4.59 X 2.88 MM

Carat Weight 0.37 CARAT

Color Grade H

Clarity Grade VS 2

Cut Grade EXCELLENT

Polish EXCELLENT

Symmetry EXCELLENT

Fluorescence NONE

Inscription(s) 733561161



October 1, 2025

IGI Report Number 733561161

ROUND BRILLIANT

NATURAL DIAMOND

4.56 - 4.59 X 2.88 MM

Carat Weight 0.37 CARAT

Color Grade H

Clarity Grade VS 2

Cut Grade EXCELLENT

Polish EXCELLENT

Symmetry EXCELLENT

Fluorescence NONE

Inscription(s) 733561161



THIS DOCUMENT WAS PRODUCED WITH THE FOLLOWING SECURITY MEASURES: SPECIAL DOCUMENT PAPER, INK SCREENS, WATERMARK, BACKGROUND DESIGNS, HOLOGRAM AND OTHER SECURITY FEATURES NOT LISTED AND DO EXCEED DOCUMENT SECURITY INDUSTRY GUIDELINES.

For terms & conditions and to verify this report, please visit [www.igi.org](http://www.igi.org)