



# INTERNATIONAL GEMOLOGICAL INSTITUTE

## DIAMOND REPORT

September 12, 2025

IGI Report Number

733560300

Description

NATURAL DIAMOND

Shape and Cutting Style

ROUND BRILLIANT

Measurements

5.20 - 5.25 X 3.25 MM

### GRADING RESULTS

Carat Weight

0.55 CARAT

Color Grade

J

Clarity Grade

VS 1

Cut Grade

EXCELLENT

### ADDITIONAL GRADING INFORMATION

Polish

EXCELLENT

Symmetry

EXCELLENT

Fluorescence

NONE

Identification Features

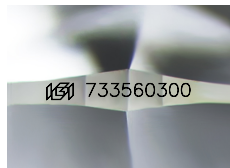
CRYSTAL CLOUD

Inscription(s)

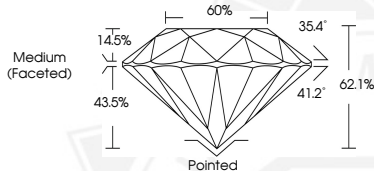
IGI 733560300

Comments: IDEAL CUT ROUND BRILLIANT

ELECTRONIC COPY



Sample Image Used



September 12, 2025

IGI Report Number 733560300

ROUND BRILLIANT

NATURAL DIAMOND

5.20 - 5.25 X 3.25 MM

Carat Weight 0.55 CARAT

Color Grade J

Clarity Grade VS 1

Cut Grade EXCELLENT

Polish EXCELLENT

Symmetry EXCELLENT

Fluorescence NONE

Inscription(s) IGI 733560300

Comments: IDEAL CUT ROUND

BRILLIANT



September 12, 2025

IGI Report Number 733560300

ROUND BRILLIANT

NATURAL DIAMOND

5.20 - 5.25 X 3.25 MM

Carat Weight 0.55 CARAT

Color Grade J

Clarity Grade VS 1

Cut Grade EXCELLENT

Polish EXCELLENT

Symmetry EXCELLENT

Fluorescence NONE

Inscription(s) IGI 733560300

Comments: IDEAL CUT ROUND

BRILLIANT



THIS DOCUMENT WAS PRODUCED WITH THE FOLLOWING SECURITY MEASURES: SPECIAL DOCUMENT PAPER, INK SCREENS, WATERMARK, BACKGROUND DESIGNS, HOLOGRAM AND OTHER SECURITY FEATURES NOT LISTED AND DO EXCEED DOCUMENT SECURITY INDUSTRY GUIDELINES.

For terms & conditions and to verify this report, please visit [www.igi.org](http://www.igi.org)