



DIAMOND REPORT

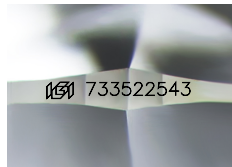
September 13, 2025
 IGI Report Number **733522543**
 Description **NATURAL DIAMOND**
 Shape and Cutting Style **ROUND BRILLIANT**
 Measurements **4.63 - 4.70 X 2.88 MM**

GRADING RESULTS

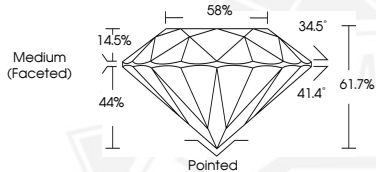
Carat Weight **0.38 CARAT**
 Color Grade **G**
 Clarity Grade **VVS 1**
 Cut Grade **EXCELLENT**

ADDITIONAL GRADING INFORMATION

Polish **EXCELLENT**
 Symmetry **EXCELLENT**
 Fluorescence **NONE**
 Identification Features **PINPOINT, FEATHER**
 Inscription(s) **IGI 733522543**
 Comments: IDEAL CUT ROUND BRILLIANT



Sample Image Used



September 13, 2025
 IGI Report Number **733522543**
 ROUND BRILLIANT
 NATURAL DIAMOND
 4.63 - 4.70 X 2.88 MM
 Carat Weight **0.38 CARAT**
 Color Grade **G**
 Clarity Grade **VVS 1**
 Cut Grade **EXCELLENT**
 Polish **EXCELLENT**
 Symmetry **EXCELLENT**
 Fluorescence **NONE**
 Inscription(s) **IGI 733522543**
 Comments: IDEAL CUT ROUND BRILLIANT



September 13, 2025
 IGI Report Number **733522543**
 ROUND BRILLIANT
 NATURAL DIAMOND
 4.63 - 4.70 X 2.88 MM
 Carat Weight **0.38 CARAT**
 Color Grade **G**
 Clarity Grade **VVS 1**
 Cut Grade **EXCELLENT**
 Polish **EXCELLENT**
 Symmetry **EXCELLENT**
 Fluorescence **NONE**
 Inscription(s) **IGI 733522543**
 Comments: IDEAL CUT ROUND BRILLIANT



THIS DOCUMENT WAS PRODUCED WITH THE FOLLOWING SECURITY MEASURES: SPECIAL DOCUMENT PAPER, INK SCREENS, WATERMARK, BACKGROUND DESIGNS, HOLOGRAM AND OTHER SECURITY FEATURES NOT LISTED AND DO EXCEED DOCUMENT SECURITY INDUSTRY GUIDELINES.