



ELECTRONIC COPY

732587771
Report verification at igi.org

DIAMOND REPORT

September 15, 2025
IGI Report Number **732587771**
Description **NATURAL DIAMOND**
Shape and Cutting Style **ROUND BRILLIANT**
Measurements **8.78 - 8.83 X 5.49 MM**

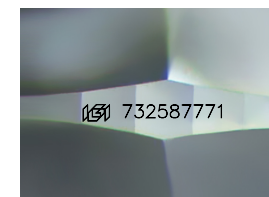
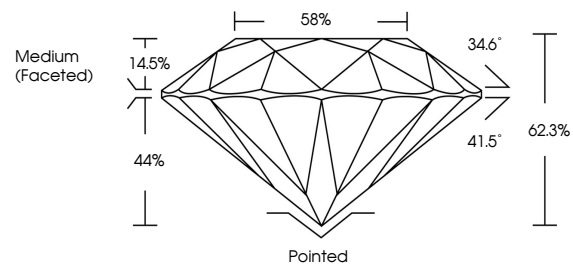
GRADING RESULTS

Carat Weight **2.61 CARATS**
Color Grade **I**
Clarity Grade **VVS 1**
Cut Grade **EXCELLENT**

ADDITIONAL GRADING INFORMATION

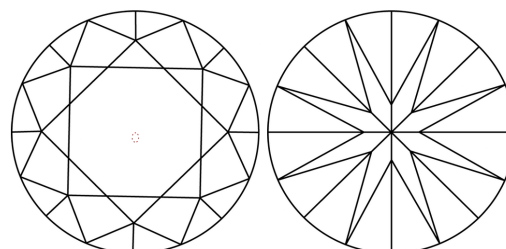
Polish **EXCELLENT**
Symmetry **EXCELLENT**
Fluorescence **NONE**
Inscription(s) **732587771**
Comments: IDEAL CUT ROUND BRILLIANT

PROPORTIONS



Sample Image Used

CLARITY CHARACTERISTICS



KEY TO SYMBOLS

Red symbols indicate internal characteristics.
Green symbols indicate external characteristics.

COLOR

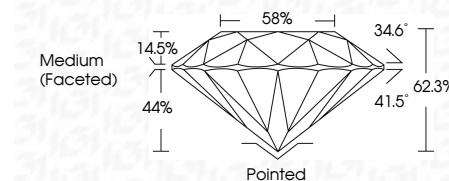
D - F	G - J	K - M	N - R	S - Z	FANCY
Colorless	Near Colorless	Slightly Tinted	Very Light Color	Light Color	

CLARITY

IF	VVS ¹⁻²	VS ¹⁻²	SI ¹⁻²	I ¹⁻³
Internally Flawless	Very Very Slightly Included	Very Slightly Included	Slightly Included	Included



September 15, 2025
IGI Report Number **732587771**
Description **NATURAL DIAMOND**
Shape and Cutting Style **ROUND BRILLIANT**
Measurements **8.78 - 8.83 X 5.49 MM**
GRADING RESULTS
Carat Weight **2.61 CARATS**
Color Grade **I**
Clarity Grade **VVS 1**
Cut Grade **EXCELLENT**



ADDITIONAL GRADING INFORMATION

Polish **EXCELLENT**
Symmetry **EXCELLENT**
Fluorescence **NONE**
Inscription(s) **732587771**
Comments: IDEAL CUT ROUND BRILLIANT



IGI



September 15, 2025
IGI Report No 732587771
ROUND BRILLIANT
8.78 - 8.83 X 5.49 MM
2.61 CARATS
Color Grade **I**
Clarity Grade **VVS 1**
Depth **EXCELLENT**
Table **62.3%**
Girdle **EXCELLENT**
Medium (Faceted)
Culet **Pointed**
Polish **EXCELLENT**
Symmetry **EXCELLENT**
Fluorescence **NONE**
Inscription(s) **732587771**
Comments: **IDEAL CUT ROUND BRILLIANT**