



ELECTRONIC COPY

DIAMOND REPORT

September 19, 2025	
IGI Report Number	732579654
Description	NATURAL DIAMOND
Shape and Cutting Style	SQUARE EMERALD CUT
Measurements	5.41 X 5.28 X 3.66 MM

GRADING RESULTS

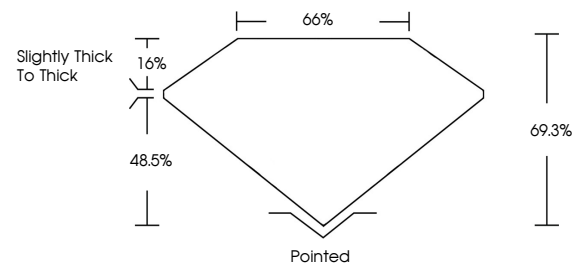
Carat Weight	1.00 CARAT
Color Grade	K
Clarity Grade	VVS 2
Cut Grade	VERY GOOD

ADDITIONAL GRADING INFORMATION

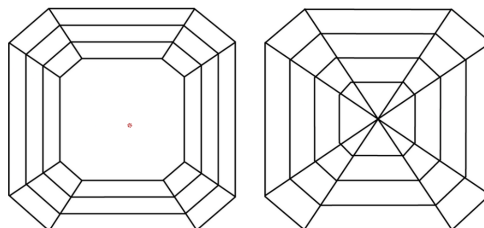
Polish	EXCELLENT
Symmetry	VERY GOOD
Fluorescence	NONE
Inscription(s)	131 732579654

732579654
Report verification at igi.org

PROPORTIONS

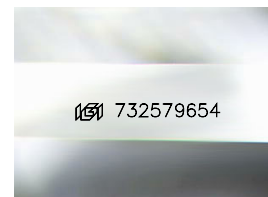


CLARITY CHARACTERISTICS



KEY TO SYMBOLS

Red symbols indicate internal characteristics.
Green symbols indicate external characteristics.



Sample Image Used

COLOR

D - F	G - J	K - M	N - R	S - Z	FANCY
Colorless	Near Colorless	Slightly Tinted	Very Light Color	Light Color	

CLARITY

IF	VVS ¹⁻²	VS ¹⁻²	SI ¹⁻²	I ¹⁻³
Internally Flawless	Very Very Slightly Included	Very Slightly Included	Slightly Included	Included

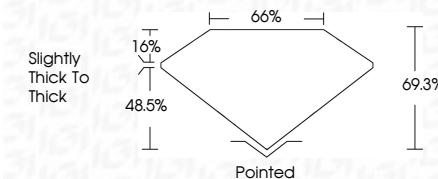
DIAMOND REPORT



September 19, 2025	
IGI Report Number	732579654
Description	NATURAL DIAMOND
Shape and Cutting Style	SQUARE EMERALD CUT
Measurements	5.41 X 5.28 X 3.66 MM

GRADING RESULTS

Carat Weight	1.00 CARAT
Color Grade	K
Clarity Grade	VVS 2
Cut Grade	VERY GOOD



ADDITIONAL GRADING INFORMATION

Polish	EXCELLENT
Symmetry	VERY GOOD
Fluorescence	NONE
Inscription(s)	(15) 732579654



© IGI 2020, International Gemological Institute

FD - 10 20



THIS DOCUMENT WAS PRODUCED WITH THE FOLLOWING SECURITY MEASURES: SPECIAL DOCUMENT PAPER, INK SCREENS, WATERMARK, BACKGROUND DESIGNS, HOLOGRAM AND OTHER SECURITY FEATURES NOT LISTED AND DO EXCEED DOCUMENT SECURITY INDUSTRY GUIDELINES

September 19, 2025
IGI Report No 732579654
SQUARE EMERALD CUT
5.41 X 5.28 X 3.66 MM

M	1.00 CARAT	K
	VS 2	
	VERY GOOD	
	69.3%	
	66%	

Pointed
EXCELLENT
VERY GOOD
NONE

Culet
Polish
Symmetry
Fluorescence

www.igi.org