



**ELECTRONIC COPY**

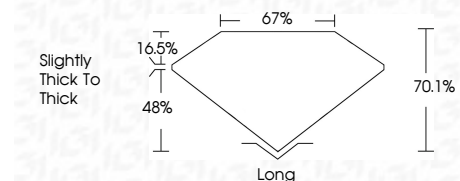
732579299  
Report verification at [igi.org](http://igi.org)



September 19, 2025  
IGI Report Number **732579299**  
Description **NATURAL DIAMOND**  
Shape and Cutting Style **EMERALD CUT**  
Measurements **8.30 X 5.82 X 4.08 MM**

**GRADING RESULTS**

Carat Weight **2.02 CARATS**  
Color Grade **K**  
Clarity Grade **VS 2**  
Cut Grade **VERY GOOD**



**ADDITIONAL GRADING INFORMATION**

Polish **EXCELLENT**  
Symmetry **EXCELLENT**  
Fluorescence **NONE**  
Inscription(s) **(IGI) 732579299**



**IGI**

September 19, 2025  
IGI Report No 732579299  
**EMERALD CUT**  
8.30 X 5.82 X 4.08 MM  
2.02 CARATS  
K  
VS 2  
VERY GOOD  
70.1%  
67%  
Slightly thick to thick  
Long  
EXCELLENT  
EXCELLENT  
NONE  
(IGI) 732579299

**DIAMOND REPORT**

September 19, 2025  
IGI Report Number **732579299**  
Description **NATURAL DIAMOND**  
Shape and Cutting Style **EMERALD CUT**  
Measurements **8.30 X 5.82 X 4.08 MM**

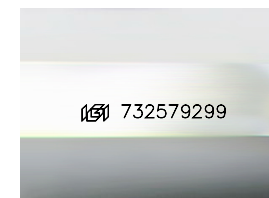
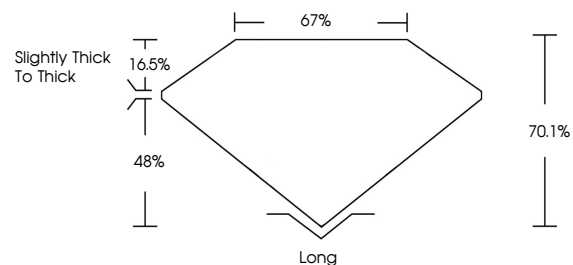
**GRADING RESULTS**

Carat Weight **2.02 CARATS**  
Color Grade **K**  
Clarity Grade **VS 2**  
Cut Grade **VERY GOOD**

**ADDITIONAL GRADING INFORMATION**

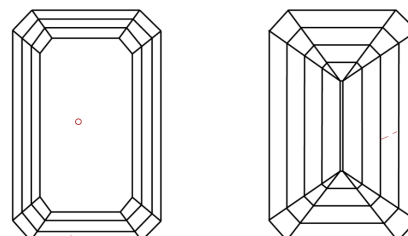
Polish **EXCELLENT**  
Symmetry **EXCELLENT**  
Fluorescence **NONE**  
Inscription(s) **(IGI) 732579299**

**PROPORTIONS**



Sample Image Used

**CLARITY CHARACTERISTICS**



**KEY TO SYMBOLS**

Red symbols indicate internal characteristics.  
Green symbols indicate external characteristics.

**COLOR**

D - F	G - J	K - M	N - R	S - Z	FANCY
Colorless	Near Colorless	Slightly Tinted	Very Light Color	Light Color	

**CLARITY**

IF	VVS <sup>1-2</sup>	VS <sup>1-2</sup>	SI <sup>1-2</sup>	I <sup>1-3</sup>
Internally Flawless	Very Very Slightly Included	Very Slightly Included	Slightly Included	Included

