



ELECTRONIC COPY

DIAMOND REPORT

September 15, 2025	
IGI Report Number	732579142
Description	NATURAL DIAMOND
Shape and Cutting Style	SQUARE EMERALD CUT
Measurements	5.33 X 5.26 X 3.70 MM

GRADING RESULTS

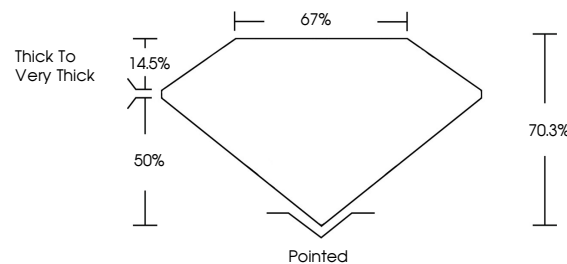
Carat Weight	1.00 CARAT
Color Grade	J
Clarity Grade	VVS 2
Cut Grade	VERY GOOD

ADDITIONAL GRADING INFORMATION

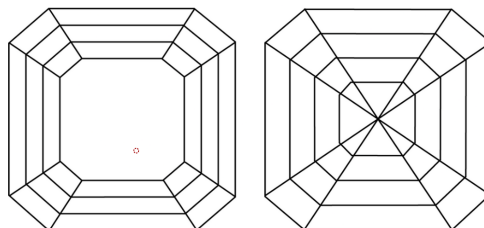
Polish	EXCELLENT
Symmetry	EXCELLENT
Fluorescence	VERY SLIGHT
Inscription(s)	131 732579142

732579142
Report verification at igi.org

PROPORTIONS

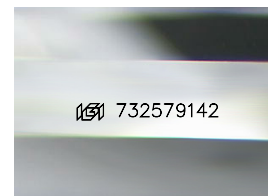


CLARITY CHARACTERISTICS



KEY TO SYMBOLS

Red symbols indicate internal characteristics.
Green symbols indicate external characteristics.



Sample Image Used

COLOR

D - F	G - J	K - M	N - R	S - Z	FANCY
Colorless	Near Colorless	Slightly Tinted	Very Light Color	Light Color	

CLARITY

IF	VVS ¹⁻²	VS ¹⁻²	SI ¹⁻²	I ¹⁻³
Internally Flawless	Very Very Slightly Included	Very Slightly Included	Slightly Included	Included

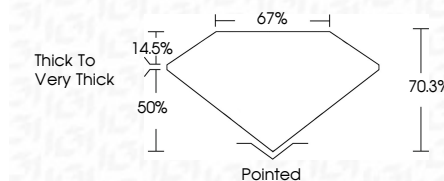
DIAMOND REPORT



September 15, 2025	
IGI Report Number	732579142
Description	NATURAL DIAMOND
Shape and Cutting Style	SQUARE EMERALD CUT
Measurements	5.33 X 5.26 X 3.70 MM

GRADING RESULTS

Carat Weight	1.00 CARAT
Color Grade	J
Clarity Grade	VVS 2
Cut Grade	VERY GOOD



ADDITIONAL GRADING INFORMATION

Polish	EXCELLENT
Symmetry	EXCELLENT
Fluorescence	VERY SLIGHT
Inscription(s)	(15) 732579142



© IGI 2020, International Gemological Institute

FD - 10 20



THIS DOCUMENT WAS PRODUCED WITH THE FOLLOWING SECURITY MEASURES: SPECIAL DOCUMENT PAPER, INK SCREENS, WATERMARK, BACKGROUND DESIGNS, HOLOGRAM AND OTHER SECURITY FEATURES NOT LISTED AND DO EXCEED DOCUMENT SECURITY INDUSTRY GUIDELINES

September 15, 2025
IGI Report No 732579142
SQUARE EMERALD CUT

1.00 CARAT J
VVS 2
VERY GOOD
70.3%
67%
Thick To Very Thick
Pointed
EXCELLENT
EXCELLENT
VERY SLIGHT
459 7506701 40

Pointed
EXCELLENT
EXCELLENT
VERY SLIGHT