



**DIAMOND REPORT**

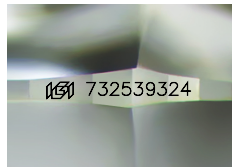
September 26, 2025  
 IGI Report Number **732539324**  
 Description **NATURAL DIAMOND**  
 Shape and Cutting Style **ROUND BRILLIANT**  
 Measurements **4.33 - 4.35 X 2.65 MM**

**GRADING RESULTS**

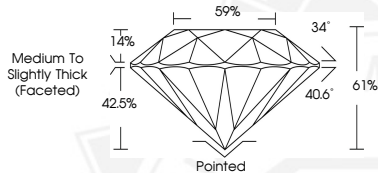
Carat Weight **0.31 CARAT**  
 Color Grade **K**  
 Clarity Grade **VS 1**  
 Cut Grade **EXCELLENT**

**ADDITIONAL GRADING INFORMATION**

Polish **EXCELLENT**  
 Symmetry **EXCELLENT**  
 Fluorescence **NONE**  
 Identification Features **FEATHER, CLOUD**  
 Inscription(s) **IGI 732539324**



Sample Image Used



September 26, 2025

IGI Report Number **732539324**

**ROUND BRILLIANT  
NATURAL DIAMOND  
4.33 - 4.35 X 2.65 MM**

Carat Weight **0.31 CARAT**  
 Color Grade **K**  
 Clarity Grade **VS 1**  
 Cut Grade **EXCELLENT**  
 Polish **EXCELLENT**  
 Symmetry **EXCELLENT**  
 Fluorescence **NONE**  
 Inscription(s) **IGI 732539324**



September 26, 2025

IGI Report Number **732539324**

**ROUND BRILLIANT  
NATURAL DIAMOND  
4.33 - 4.35 X 2.65 MM**

Carat Weight **0.31 CARAT**  
 Color Grade **K**  
 Clarity Grade **VS 1**  
 Cut Grade **EXCELLENT**  
 Polish **EXCELLENT**  
 Symmetry **EXCELLENT**  
 Fluorescence **NONE**  
 Inscription(s) **IGI 732539324**



THIS DOCUMENT WAS PRODUCED WITH THE FOLLOWING SECURITY MEASURES: SPECIAL DOCUMENT PAPER, INK SCREENS, WATERMARK, BACKGROUND DESIGNS, HOLOGRAM AND OTHER SECURITY FEATURES NOT LISTED AND DO EXCEED DOCUMENT SECURITY INDUSTRY GUIDELINES.