



**DIAMOND REPORT**

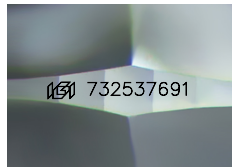
September 13, 2025  
 IGI Report Number **732537691**  
 Description **NATURAL DIAMOND**  
 Shape and Cutting Style **ROUND BRILLIANT**  
 Measurements **4.51 - 4.54 X 2.83 MM**

**GRADING RESULTS**

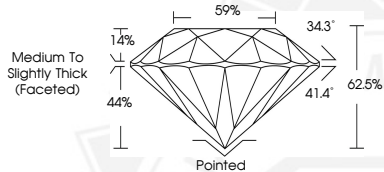
Carat Weight **0.36 CARAT**  
 Color Grade **H**  
 Clarity Grade **SI 2**  
 Cut Grade **EXCELLENT**

**ADDITIONAL GRADING INFORMATION**

Polish **EXCELLENT**  
 Symmetry **EXCELLENT**  
 Fluorescence **NONE**  
 Identification Features **FEATHER, CRYSTAL CLOUD**  
 Inscription(s) **IGI 732537691**



Sample Image Used



September 13, 2025  
 IGI Report Number **732537691**  
 ROUND BRILLIANT  
 NATURAL DIAMOND  
 4.51 - 4.54 X 2.83 MM  
 Carat Weight **0.36 CARAT**  
 Color Grade **H**  
 Clarity Grade **SI 2**  
 Cut Grade **EXCELLENT**  
 Polish **EXCELLENT**  
 Symmetry **EXCELLENT**  
 Fluorescence **NONE**  
 Inscription(s) **IGI 732537691**



September 13, 2025  
 IGI Report Number **732537691**  
 ROUND BRILLIANT  
 NATURAL DIAMOND  
 4.51 - 4.54 X 2.83 MM  
 Carat Weight **0.36 CARAT**  
 Color Grade **H**  
 Clarity Grade **SI 2**  
 Cut Grade **EXCELLENT**  
 Polish **EXCELLENT**  
 Symmetry **EXCELLENT**  
 Fluorescence **NONE**  
 Inscription(s) **IGI 732537691**



THIS DOCUMENT WAS PRODUCED WITH THE FOLLOWING SECURITY MEASURES: SPECIAL DOCUMENT PAPER, INK SCREENS, WATERMARK, BACKGROUND DESIGNS, HOLOGRAM AND OTHER SECURITY FEATURES NOT LISTED AND DO EXCEED DOCUMENT SECURITY INDUSTRY GUIDELINES.