



**DIAMOND REPORT**

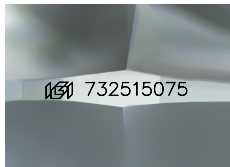
September 13, 2025  
 IGI Report Number **732515075**  
 Description **NATURAL DIAMOND**  
 Shape and Cutting Style **ROUND BRILLIANT**  
 Measurements **5.15 - 5.19 X 3.23 MM**

**GRADING RESULTS**

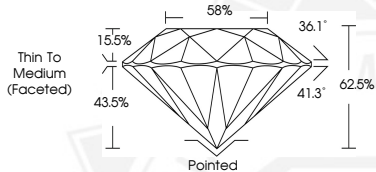
Carat Weight **0.53 CARAT**  
 Color Grade **G**  
 Clarity Grade **VVS 2**  
 Cut Grade **EXCELLENT**

**ADDITIONAL GRADING INFORMATION**

Polish **EXCELLENT**  
 Symmetry **EXCELLENT**  
 Fluorescence **NONE**  
 Identification Features **NEEDLE, PINPOINT**  
 Inscription(s) **IGI 732515075**  
 Comments: IDEAL CUT ROUND BRILLIANT



Sample Image Used



September 13, 2025

IGI Report Number **732515075**

**ROUND BRILLIANT**

**NATURAL DIAMOND**

**5.15 - 5.19 X 3.23 MM**

Carat Weight **0.53 CARAT**

Color Grade **G**

Clarity Grade **VVS 2**

Cut Grade **EXCELLENT**

Polish **EXCELLENT**

Symmetry **EXCELLENT**

Fluorescence **NONE**

Inscription(s) **IGI 732515075**

Comments: IDEAL CUT ROUND

BRILLIANT



September 13, 2025

IGI Report Number **732515075**

**ROUND BRILLIANT**

**NATURAL DIAMOND**

**5.15 - 5.19 X 3.23 MM**

Carat Weight **0.53 CARAT**

Color Grade **G**

Clarity Grade **VVS 2**

Cut Grade **EXCELLENT**

Polish **EXCELLENT**

Symmetry **EXCELLENT**

Fluorescence **NONE**

Inscription(s) **IGI 732515075**

Comments: IDEAL CUT ROUND

BRILLIANT



THIS DOCUMENT WAS PRODUCED WITH THE FOLLOWING SECURITY MEASURES: SPECIAL DOCUMENT PAPER, INK SCREENS, WATERMARK, BACKGROUND DESIGNS, HOLOGRAM AND OTHER SECURITY FEATURES NOT LISTED AND DO EXCEED DOCUMENT SECURITY INDUSTRY GUIDELINES.