



**ELECTRONIC COPY**

731570731  
Report verification at [igi.org](http://igi.org)

**DIAMOND REPORT**

September 8, 2025  
IGI Report Number **731570731**  
Description **NATURAL DIAMOND**  
Shape and Cutting Style **ROUND BRILLIANT**  
Measurements **10.81 - 10.89 X 6.85 MM**

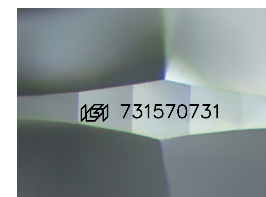
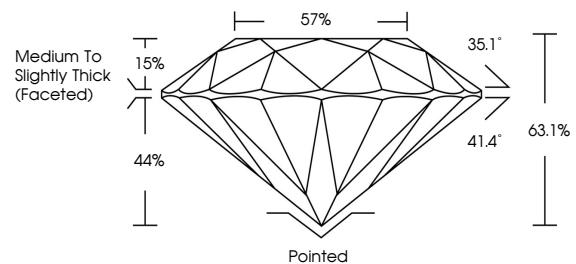
**GRADING RESULTS**

Carat Weight **5.02 CARATS**  
Color Grade **J**  
Clarity Grade **SI 1**  
Cut Grade **EXCELLENT**

**ADDITIONAL GRADING INFORMATION**

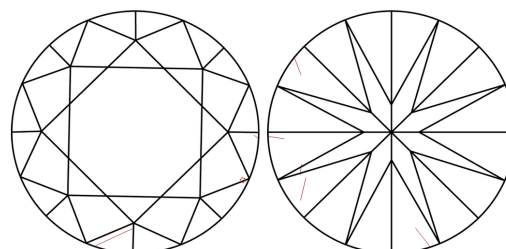
Polish **EXCELLENT**  
Symmetry **EXCELLENT**  
Fluorescence **NONE**  
Inscription(s) **731570731**

**PROPORTIONS**



Sample Image Used

**CLARITY CHARACTERISTICS**



**KEY TO SYMBOLS**

Red symbols indicate internal characteristics.  
Green symbols indicate external characteristics.

**COLOR**

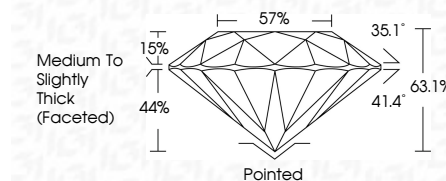
D - F	G - J	K - M	N - R	S - Z	FANCY
Colorless	Near Colorless	Slightly Tinted	Very Light Color	Light Color	

**CLARITY**

IF	VVS <sup>1-2</sup>	VS <sup>1-2</sup>	SI <sup>1-2</sup>	I <sup>1-3</sup>
Internally Flawless	Very Very Slightly Included	Very Slightly Included	Slightly Included	Included



September 8, 2025  
IGI Report Number **731570731**  
Description **NATURAL DIAMOND**  
Shape and Cutting Style **ROUND BRILLIANT**  
Measurements **10.81 - 10.89 X 6.85 MM**  
**GRADING RESULTS**  
Carat Weight **5.02 CARATS**  
Color Grade **J**  
Clarity Grade **SI 1**  
Cut Grade **EXCELLENT**



**ADDITIONAL GRADING INFORMATION**

Polish **EXCELLENT**  
Symmetry **EXCELLENT**  
Fluorescence **NONE**  
Inscription(s) **731570731**



**IGI**



September 8, 2025  
IGI Report No 731570731  
**ROUND BRILLIANT**  
**5.02 CARATS**  
Carat Weight **J**  
Color Grade **EXCELLENT**  
Clarity Grade **SI 1**  
Depth **63.1%**  
Table **57%**  
Girdle **Medium To Slightly Thick (Faceted)**  
Culet **Pointed**  
Polish **EXCELLENT**  
Symmetry **EXCELLENT**  
Fluorescence **NONE**  
Inscriptions(s) **731570731**