



**DIAMOND REPORT**

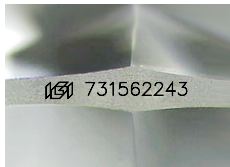
September 26, 2025  
 IGI Report Number **731562243**  
 Description **NATURAL DIAMOND**  
 Shape and Cutting Style **ROUND BRILLIANT**  
 Measurements **6.21 - 6.25 X 3.73 MM**

**GRADING RESULTS**

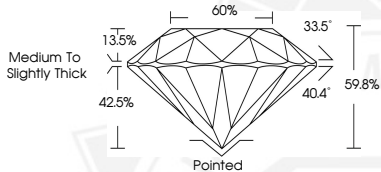
Carat Weight **0.90 CARAT**  
 Color Grade **O-P**  
 Clarity Grade **SI 1**  
 Cut Grade **EXCELLENT**

**ADDITIONAL GRADING INFORMATION**

Polish **EXCELLENT**  
 Symmetry **EXCELLENT**  
 Fluorescence **SLIGHT**  
 Identification Features **FEATHER, CRYSTAL, CLOUD, CAVITY**  
 Inscription(s) **IGI 731562243**  
 Comments: IDEAL CUT ROUND BRILLIANT



Sample Image Used



September 26, 2025

IGI Report Number **731562243**

**ROUND BRILLIANT  
 NATURAL DIAMOND  
 6.21 - 6.25 X 3.73 MM**

Carat Weight **0.90 CARAT**  
 Color Grade **O-P**  
 Clarity Grade **SI 1**  
 Cut Grade **EXCELLENT**  
 Polish **EXCELLENT**  
 Symmetry **EXCELLENT**  
 Fluorescence **SLIGHT**  
 Inscription(s) **IGI 731562243**

Comments: IDEAL CUT ROUND BRILLIANT



September 26, 2025

IGI Report Number **731562243**

**ROUND BRILLIANT  
 NATURAL DIAMOND  
 6.21 - 6.25 X 3.73 MM**

Carat Weight **0.90 CARAT**  
 Color Grade **O-P**  
 Clarity Grade **SI 1**  
 Cut Grade **EXCELLENT**  
 Polish **EXCELLENT**  
 Symmetry **EXCELLENT**  
 Fluorescence **SLIGHT**  
 Inscription(s) **IGI 731562243**

Comments: IDEAL CUT ROUND BRILLIANT



THIS DOCUMENT WAS PRODUCED WITH THE FOLLOWING SECURITY MEASURES: SPECIAL DOCUMENT PAPER, INK SCREENS, WATERMARK, BACKGROUND DESIGNS, HOLOGRAM AND OTHER SECURITY FEATURES NOT LISTED AND DO EXCEED DOCUMENT SECURITY INDUSTRY GUIDELINES.