



# INTERNATIONAL GEMOLOGICAL INSTITUTE

## DIAMOND REPORT

October 15, 2025

IGI Report Number

731561561

Description

NATURAL DIAMOND

Shape and Cutting Style

ROUND BRILLIANT

Measurements

4.65 - 4.67 X 2.91 MM

### GRADING RESULTS

Carat Weight

0.40 CARAT

Color Grade

I

Clarity Grade

VS 1

Cut Grade

VERY GOOD

### ADDITIONAL GRADING INFORMATION

Polish

EXCELLENT

Symmetry

EXCELLENT

Fluorescence

NONE

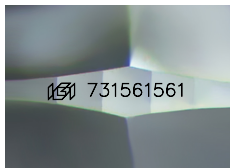
Identification Features

FEATHER, INDENTED NATURAL

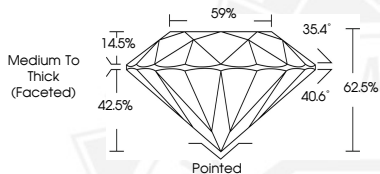
Inscription(s)

IGI 731561561

ELECTRONIC COPY



Sample Image Used



October 15, 2025

IGI Report Number 731561561

ROUND BRILLIANT

NATURAL DIAMOND

4.65 - 4.67 X 2.91 MM

Carat Weight 0.40 CARAT

Color Grade I

Clarity Grade VS 1

Cut Grade VERY GOOD

Polish EXCELLENT

Symmetry EXCELLENT

Fluorescence NONE

Inscription(s) IGI 731561561



October 15, 2025

IGI Report Number 731561561

ROUND BRILLIANT

NATURAL DIAMOND

4.65 - 4.67 X 2.91 MM

Carat Weight 0.40 CARAT

Color Grade I

Clarity Grade VS 1

Cut Grade VERY GOOD

Polish EXCELLENT

Symmetry EXCELLENT

Fluorescence NONE

Inscription(s) IGI 731561561



THIS DOCUMENT WAS PRODUCED WITH THE FOLLOWING SECURITY MEASURES: SPECIAL DOCUMENT PAPER, INK SCREENS, WATERMARK, BACKGROUND DESIGNS, HOLOGRAM AND OTHER SECURITY FEATURES NOT LISTED AND DO EXCEED DOCUMENT SECURITY INDUSTRY GUIDELINES.

For terms & conditions and to verify this report, please visit [www.igi.org](http://www.igi.org)