



# INTERNATIONAL GEMOLOGICAL INSTITUTE

## DIAMOND REPORT

September 25, 2025

IGI Report Number

731560514

Description

NATURAL DIAMOND

Shape and Cutting Style

ROUND BRILLIANT

Measurements

5.14 - 5.17 X 3.19 MM

## GRADING RESULTS

Carat Weight

0.52 CARAT

Color Grade

J

Clarity Grade

SI 2

Cut Grade

EXCELLENT

## ADDITIONAL GRADING INFORMATION

Polish

EXCELLENT

Symmetry

EXCELLENT

Fluorescence

NONE

Identification Features

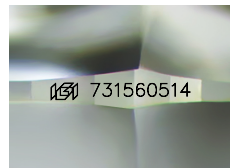
FEATHER, CRYSTAL CLOUD

Inscription(s)

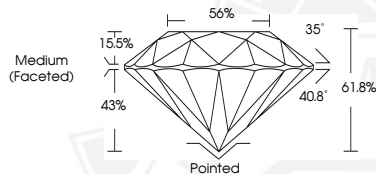
731560514

Comments: IDEAL CUT ROUND BRILLIANT

ELECTRONIC COPY



Sample Image Used



THIS DOCUMENT WAS PRODUCED WITH THE FOLLOWING SECURITY MEASURES: SPECIAL DOCUMENT PAPER, INK SCREENS, WATERMARK, BACKGROUND DESIGNS, HOLOGRAM AND OTHER SECURITY FEATURES NOT LISTED AND DO EXCEED DOCUMENT SECURITY INDUSTRY GUIDELINES.

For terms & conditions and to verify this report, please visit [www.igi.org](http://www.igi.org)



September 25, 2025

IGI Report Number 731560514

ROUND BRILLIANT

NATURAL DIAMOND

5.14 - 5.17 X 3.19 MM

Carat Weight 0.52 CARAT

Color Grade J

Clarity Grade SI 2

Cut Grade EXCELLENT

Polish EXCELLENT

Symmetry EXCELLENT

Fluorescence NONE

Inscription(s) 731560514

Comments: IDEAL CUT ROUND

BRILLIANT



September 25, 2025

IGI Report Number 731560514

ROUND BRILLIANT

NATURAL DIAMOND

5.14 - 5.17 X 3.19 MM

Carat Weight 0.52 CARAT

Color Grade J

Clarity Grade SI 2

Cut Grade EXCELLENT

Polish EXCELLENT

Symmetry EXCELLENT

Fluorescence NONE

Inscription(s) 731560514

Comments: IDEAL CUT ROUND

BRILLIANT