



INTERNATIONAL GEMOLOGICAL INSTITUTE

DIAMOND REPORT

September 3, 2025
IGI Report Number
Description
Shape and Cutting Style
Measurements

731559759
NATURAL DIAMOND
ROUND BRILLIANT
4.79 - 4.82 X 3.02 MM

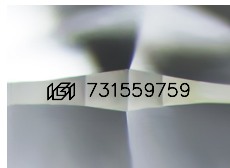
GRADING RESULTS

Carat Weight **0.43 CARAT**
Color Grade **E**
Clarity Grade **VS 2**
Cut Grade **EXCELLENT**

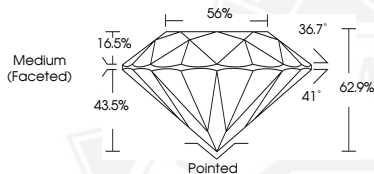
ADDITIONAL GRADING INFORMATION

Polish **EXCELLENT**
Symmetry **EXCELLENT**
Fluorescence **VERY SLIGHT**
Identification Features **CRYSTAL, CLOUD, NEEDLE**
Inscription(s) **(G) 731559759**

ELECTRONIC COPY



Sample Image Used



THIS DOCUMENT WAS PRODUCED WITH THE FOLLOWING SECURITY MEASURES: SPECIAL DOCUMENT PAPER, INK SCREENS, WATERMARK, BACKGROUND DESIGNS, HOLOGRAM AND OTHER SECURITY FEATURES NOT LISTED AND DO EXCEED DOCUMENT SECURITY INDUSTRY GUIDELINES.

For terms & conditions and to verify this report, please visit www.igi.org



September 3, 2025

IGI Report Number **731559759**

ROUND BRILLIANT

NATURAL DIAMOND

4.79 - 4.82 X 3.02 MM

Carat Weight **0.43 CARAT**
Color Grade **E**
Clarity Grade **VS 2**
Cut Grade **EXCELLENT**
Polish **EXCELLENT**
Symmetry **EXCELLENT**
Fluorescence **VERY SLIGHT**
Inscription(s) **(G) 731559759**



September 3, 2025

IGI Report Number **731559759**

ROUND BRILLIANT

NATURAL DIAMOND

4.79 - 4.82 X 3.02 MM

Carat Weight **0.43 CARAT**
Color Grade **E**
Clarity Grade **VS 2**
Cut Grade **EXCELLENT**
Polish **EXCELLENT**
Symmetry **EXCELLENT**
Fluorescence **VERY SLIGHT**
Inscription(s) **(G) 731559759**