



# INTERNATIONAL GEMOLOGICAL INSTITUTE

## DIAMOND REPORT

September 3, 2025

IGI Report Number

731559747

Description

NATURAL DIAMOND

Shape and Cutting Style

ROUND BRILLIANT

Measurements

4.97 - 5.00 X 3.06 MM

### GRADING RESULTS

Carat Weight

0.47 CARAT

Color Grade

I

Clarity Grade

VS 2

Cut Grade

EXCELLENT

### ADDITIONAL GRADING INFORMATION

Polish

EXCELLENT

Symmetry

EXCELLENT

Fluorescence

NONE

Identification Features

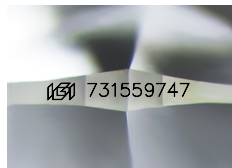
FEATHER, CRYSTAL

Inscription(s)

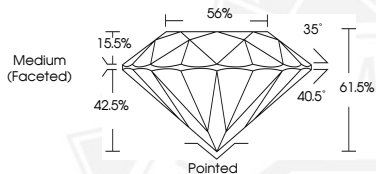
IGI 731559747

Comments: IDEAL CUT ROUND BRILLIANT

ELECTRONIC COPY



Sample Image Used



September 3, 2025

IGI Report Number 731559747

ROUND BRILLIANT

NATURAL DIAMOND

4.97 - 5.00 X 3.06 MM

Carat Weight 0.47 CARAT

Color Grade I

Clarity Grade VS 2

Cut Grade EXCELLENT

Polish EXCELLENT

Symmetry EXCELLENT

Fluorescence NONE

Inscription(s) IGI 731559747

Comments: IDEAL CUT ROUND

BRILLIANT



September 3, 2025

IGI Report Number 731559747

ROUND BRILLIANT

NATURAL DIAMOND

4.97 - 5.00 X 3.06 MM

Carat Weight 0.47 CARAT

Color Grade I

Clarity Grade VS 2

Cut Grade EXCELLENT

Polish EXCELLENT

Symmetry EXCELLENT

Fluorescence NONE

Inscription(s) IGI 731559747

Comments: IDEAL CUT ROUND

BRILLIANT



THIS DOCUMENT WAS PRODUCED WITH THE FOLLOWING SECURITY MEASURES: SPECIAL DOCUMENT PAPER, INK SCREENS, WATERMARK, BACKGROUND DESIGNS, HOLOGRAM AND OTHER SECURITY FEATURES NOT LISTED AND DO EXCEED DOCUMENT SECURITY INDUSTRY GUIDELINES.

For terms & conditions and to verify this report, please visit [www.igi.org](http://www.igi.org)