



DIAMOND REPORT

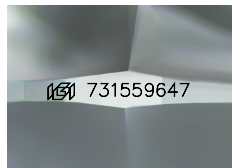
September 8, 2025
 IGI Report Number **731559647**
 Description **NATURAL DIAMOND**
 Shape and Cutting Style **ROUND BRILLIANT**
 Measurements **5.66 - 5.70 X 3.57 MM**

GRADING RESULTS

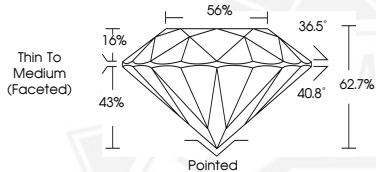
Carat Weight **0.71 CARAT**
 Color Grade **G**
 Clarity Grade **VVS 1**
 Cut Grade **EXCELLENT**

ADDITIONAL GRADING INFORMATION

Polish **EXCELLENT**
 Symmetry **EXCELLENT**
 Fluorescence **NONE**
 Identification Features **PINPOINT**
 Inscription(s) **IGI 731559647**



Sample Image Used



September 8, 2025
 IGI Report Number **731559647**
 ROUND BRILLIANT
 NATURAL DIAMOND
 5.66 - 5.70 X 3.57 MM
 Carat Weight **0.71 CARAT**
 Color Grade **G**
 Clarity Grade **VVS 1**
 Cut Grade **EXCELLENT**
 Polish **EXCELLENT**
 Symmetry **EXCELLENT**
 Fluorescence **NONE**
 Inscription(s) **IGI 731559647**



September 8, 2025
 IGI Report Number **731559647**
 ROUND BRILLIANT
 NATURAL DIAMOND
 5.66 - 5.70 X 3.57 MM
 Carat Weight **0.71 CARAT**
 Color Grade **G**
 Clarity Grade **VVS 1**
 Cut Grade **EXCELLENT**
 Polish **EXCELLENT**
 Symmetry **EXCELLENT**
 Fluorescence **NONE**
 Inscription(s) **IGI 731559647**



THIS DOCUMENT WAS PRODUCED WITH THE FOLLOWING SECURITY MEASURES: SPECIAL DOCUMENT PAPER, INK SCREENS, WATERMARK, BACKGROUND DESIGNS, HOLOGRAM AND OTHER SECURITY FEATURES NOT LISTED AND DO EXCEED DOCUMENT SECURITY INDUSTRY GUIDELINES.