



**DIAMOND REPORT**

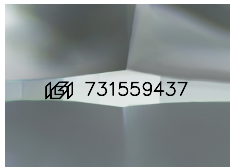
September 8, 2025  
IGI Report Number **731559437**  
Description **NATURAL DIAMOND**  
Shape and Cutting Style **ROUND BRILLIANT**  
Measurements **5.47 - 5.51 X 3.47 MM**

**GRADING RESULTS**

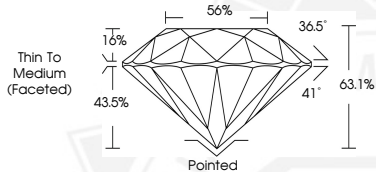
Carat Weight **0.65 CARAT**  
Color Grade **J**  
Clarity Grade **VVS 1**  
Cut Grade **EXCELLENT**

**ADDITIONAL GRADING INFORMATION**

Polish **EXCELLENT**  
Symmetry **EXCELLENT**  
Fluorescence **NONE**  
Identification Features **FEATHER, PINPOINT**  
Inscription(s) **IGI 731559437**



Sample Image Used



September 8, 2025  
IGI Report Number **731559437**  
**ROUND BRILLIANT**  
**NATURAL DIAMOND**  
**5.47 - 5.51 X 3.47 MM**  
Carat Weight **0.65 CARAT**  
Color Grade **J**  
Clarity Grade **VVS 1**  
Cut Grade **EXCELLENT**  
Polish **EXCELLENT**  
Symmetry **EXCELLENT**  
Fluorescence **NONE**  
Inscription(s) **IGI 731559437**



September 8, 2025  
IGI Report Number **731559437**  
**ROUND BRILLIANT**  
**NATURAL DIAMOND**  
**5.47 - 5.51 X 3.47 MM**  
Carat Weight **0.65 CARAT**  
Color Grade **J**  
Clarity Grade **VVS 1**  
Cut Grade **EXCELLENT**  
Polish **EXCELLENT**  
Symmetry **EXCELLENT**  
Fluorescence **NONE**  
Inscription(s) **IGI 731559437**



THIS DOCUMENT WAS PRODUCED WITH THE FOLLOWING SECURITY MEASURES: SPECIAL DOCUMENT PAPER, INK SCREENS, WATERMARK, BACKGROUND DESIGNS, HOLOGRAM AND OTHER SECURITY FEATURES NOT LISTED AND DO EXCEED DOCUMENT SECURITY INDUSTRY GUIDELINES.