



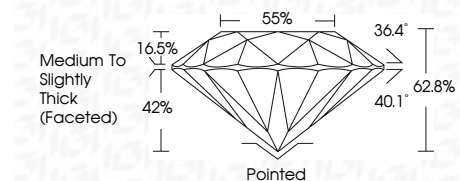
ELECTRONIC COPY

731557232
Report verification at igi.org



September 22, 2025
IGI Report Number **731557232**
Description **NATURAL DIAMOND**
Shape and Cutting Style **ROUND BRILLIANT**
Measurements **13.12 - 13.19 X 8.26 MM**

GRADING RESULTS
Carat Weight **9.04 CARATS**
Color Grade **I**
Clarity Grade **SI 2**
Cut Grade **EXCELLENT**



ADDITIONAL GRADING INFORMATION
Polish **EXCELLENT**
Symmetry **EXCELLENT**
Fluorescence **NONE**
Inscription(s) **(IGI) 731557232**



September 22, 2025
IGI Report No 731557232
ROUND BRILLIANT
13.12 - 13.19 X 8.26 MM
9.04 CARATS
I
SI 2
EXCELLENT
62.8%
85%
Medium To Slightly Thick (Faceted)
Pointed
EXCELLENT
EXCELLENT
NONE
NONE
(IGI) 731557232

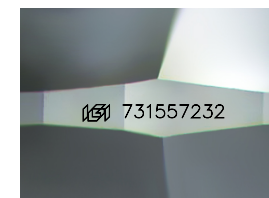
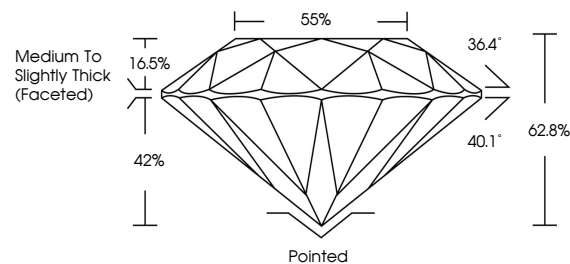
DIAMOND REPORT

September 22, 2025
IGI Report Number **731557232**
Description **NATURAL DIAMOND**
Shape and Cutting Style **ROUND BRILLIANT**
Measurements **13.12 - 13.19 X 8.26 MM**

GRADING RESULTS
Carat Weight **9.04 CARATS**
Color Grade **I**
Clarity Grade **SI 2**
Cut Grade **EXCELLENT**

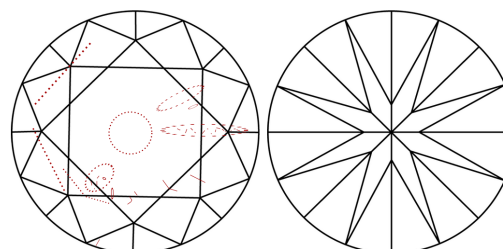
ADDITIONAL GRADING INFORMATION
Polish **EXCELLENT**
Symmetry **EXCELLENT**
Fluorescence **NONE**
Inscription(s) **(IGI) 731557232**

PROPORTIONS



Sample Image Used

CLARITY CHARACTERISTICS



KEY TO SYMBOLS

Red symbols indicate internal characteristics.
Green symbols indicate external characteristics.

COLOR

D - F	G - J	K - M	N - R	S - Z	FANCY
Colorless	Near Colorless	Slightly Tinted	Very Light Color	Light Color	

CLARITY

IF	VVS ¹⁻²	VS ¹⁻²	SI ¹⁻²	I ¹⁻³
Internally Flawless	Very Very Slightly Included	Very Slightly Included	Slightly Included	Included

