



**ELECTRONIC COPY**

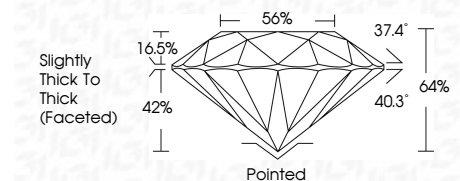
731557228  
Report verification at [igi.org](http://igi.org)



September 25, 2025  
IGI Report Number **731557228**  
Description **NATURAL DIAMOND**  
Shape and Cutting Style **ROUND BRILLIANT**  
Measurements **10.00 - 10.06 X 6.42 MM**

**GRADING RESULTS**

Carat Weight **4.10 CARATS**  
Color Grade **I**  
Clarity Grade **SI 2**  
Cut Grade **VERY GOOD**



**ADDITIONAL GRADING INFORMATION**

Polish **EXCELLENT**  
Symmetry **EXCELLENT**  
Fluorescence **VERY SLIGHT**  
Inscription(s) **(IGI) 731557228**



**IGI**

September 25, 2025  
IGI Report No 731557228  
**ROUND BRILLIANT**  
4.10 CARATS  
I  
SI 2  
VERY GOOD  
4.10  
64%  
Slightly Thick To Thick (Faceted)  
Pointed  
EXCELLENT  
EXCELLENT  
VERY SLIGHT  
(IGI) 731557228

**DIAMOND REPORT**

September 25, 2025  
IGI Report Number **731557228**  
Description **NATURAL DIAMOND**  
Shape and Cutting Style **ROUND BRILLIANT**  
Measurements **10.00 - 10.06 X 6.42 MM**

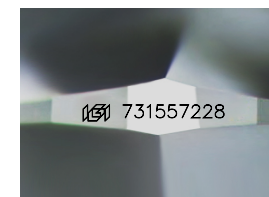
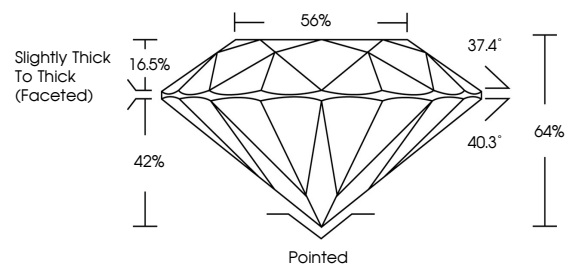
**GRADING RESULTS**

Carat Weight **4.10 CARATS**  
Color Grade **I**  
Clarity Grade **SI 2**  
Cut Grade **VERY GOOD**

**ADDITIONAL GRADING INFORMATION**

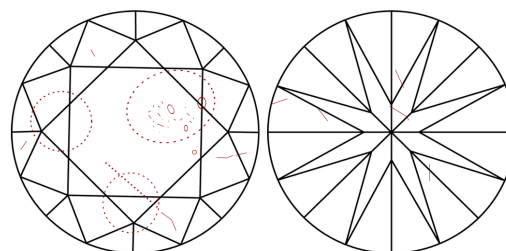
Polish **EXCELLENT**  
Symmetry **EXCELLENT**  
Fluorescence **VERY SLIGHT**  
Inscription(s) **(IGI) 731557228**

**PROPORTIONS**



Sample Image Used

**CLARITY CHARACTERISTICS**



**KEY TO SYMBOLS**

Red symbols indicate internal characteristics.  
Green symbols indicate external characteristics.

**COLOR**

D - F	G - J	K - M	N - R	S - Z	FANCY
Colorless	Near Colorless	Slightly Tinted	Very Light Color	Light Color	

**CLARITY**

IF	VVS <sup>1-2</sup>	VS <sup>1-2</sup>	SI <sup>1-2</sup>	I <sup>1-3</sup>
Internally Flawless	Very Very Slightly Included	Very Slightly Included	Slightly Included	Included

