



**ELECTRONIC COPY**

731536096  
Report verification at [igi.org](http://igi.org)



October 6, 2025

IGI Report Number **731536096**

Description **NATURAL DIAMOND**

Shape and Cutting Style **ROUND BRILLIANT**

Measurements **8.21 - 8.35 X 5.11 MM**

**GRADING RESULTS**

Carat Weight **2.14 CARATS**

Color Grade **K**

Clarity Grade **INTERNALLY FLAWLESS**

Cut Grade **EXCELLENT**

October 6, 2025

IGI Report Number **731536096**

Description **NATURAL DIAMOND**

Shape and Cutting Style **ROUND BRILLIANT**

Measurements **8.21 - 8.35 X 5.11 MM**

**GRADING RESULTS**

Carat Weight **2.14 CARATS**

Color Grade **K**

Clarity Grade **INTERNALLY FLAWLESS**

Cut Grade **EXCELLENT**

**ADDITIONAL GRADING INFORMATION**

Polish **EXCELLENT**

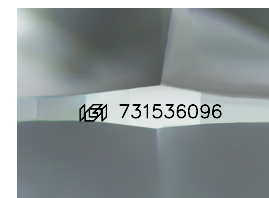
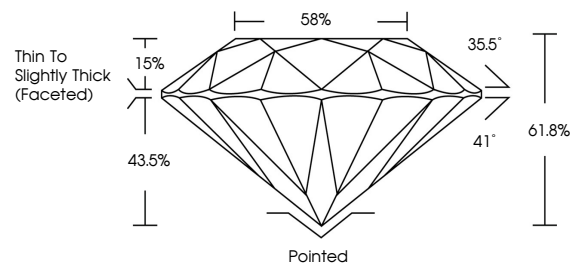
Symmetry **EXCELLENT**

Fluorescence **NONE**

Inscription(s) **731536096**

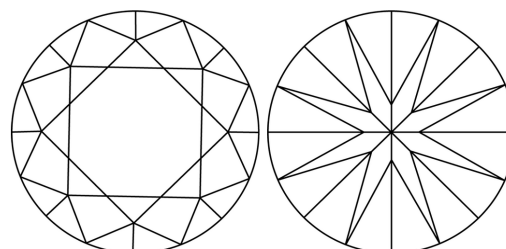
Comments: IDEAL CUT ROUND BRILLIANT

**PROPORTIONS**



Sample Image Used

**CLARITY CHARACTERISTICS**



**KEY TO SYMBOLS**

Red symbols indicate internal characteristics.  
Green symbols indicate external characteristics.

**COLOR**

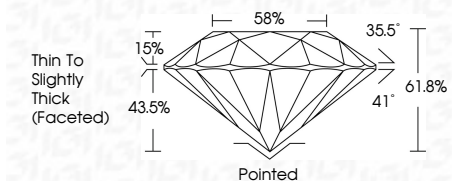
D - F      G - J      K - M      N - R      S - Z      FANCY

Colorless      Near Colorless      Slightly Tinted      Very Light Color      Light Color

**CLARITY**

IF      VS<sup>1-2</sup>      VS<sup>1-2</sup>      SI<sup>1-2</sup>      I<sup>1-3</sup>

Internally Flawless      Very Very Slightly Included      Very Slightly Included      Slightly Included      Included



**ADDITIONAL GRADING INFORMATION**

Polish **EXCELLENT**

Symmetry **EXCELLENT**

Fluorescence **NONE**

Inscription(s) **731536096**

Comments: IDEAL CUT ROUND BRILLIANT



**IGI**



October 6, 2025	IGI Report No 731536096	2.14 CARATS	K	IF	EXCELLENT	61.8%	58%	Thin To Slightly Thick (Faceted)	Pointed	EXCELLENT	EXCELLENT	NONE	731536096
ROUND BRILLIANT	8.21 - 8.35 X 5.11 MM	Carat Weight	Color Grade	Clarity Grade	Cut Grade	Depth	Table	Girdle	Culet	Polish	Symmetry	Fluorescence	Inscription(s)
													Comments: IDEAL CUT ROUND BRILLIANT