



ELECTRONIC COPY

731535780
Report verification at igi.org



September 29, 2025

IGI Report Number **731535780**

Description **NATURAL DIAMOND**

Shape and Cutting Style **ROUND BRILLIANT**

Measurements **12.49 - 12.50 X 7.60 MM**

GRADING RESULTS

Carat Weight **7.28 CARATS**

Color Grade **J**

Clarity Grade **VS 2**

Cut Grade **EXCELLENT**

DIAMOND REPORT

September 29, 2025

IGI Report Number **731535780**

Description **NATURAL DIAMOND**

Shape and Cutting Style **ROUND BRILLIANT**

Measurements **12.49 - 12.50 X 7.60 MM**

GRADING RESULTS

Carat Weight **7.28 CARATS**

Color Grade **J**

Clarity Grade **VS 2**

Cut Grade **EXCELLENT**

ADDITIONAL GRADING INFORMATION

Polish **EXCELLENT**

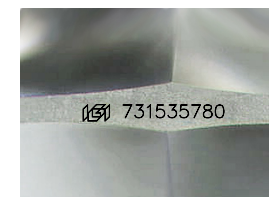
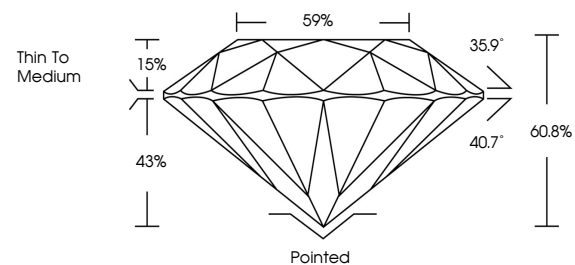
Symmetry **EXCELLENT**

Fluorescence **NONE**

Inscription(s) **731535780**

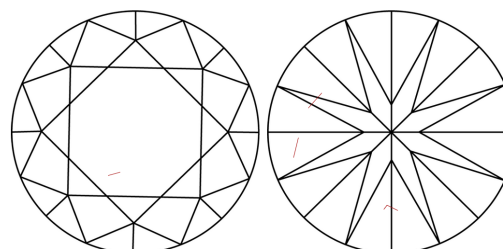
Comments: IDEAL CUT ROUND BRILLIANT

PROPORTIONS



Sample Image Used

CLARITY CHARACTERISTICS



KEY TO SYMBOLS

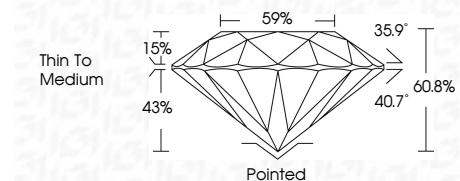
Red symbols indicate internal characteristics.
Green symbols indicate external characteristics.

COLOR

D - F	G - J	K - M	N - R	S - Z	FANCY
Colorless	Near Colorless	Slightly Tinted	Very Light Color	Light Color	

CLARITY

IF	VVS ¹⁻²	VS ¹⁻²	SI ¹⁻²	I ¹⁻³
Internally Flawless	Very Very Slightly Included	Very Slightly Included	Slightly Included	Included



ADDITIONAL GRADING INFORMATION

Polish **EXCELLENT**

Symmetry **EXCELLENT**

Fluorescence **NONE**

Inscription(s) **731535780**

Comments: IDEAL CUT ROUND BRILLIANT



IGI



September 29, 2025
IGI Report No 731535780
ROUND BRILLIANT

12.49 - 12.50 X 7.60 MM
7.28 CARATS
J
VS 2
EXCELLENT
60.8%
59%
Thin To Medium

Culet
Polish
Symmetry
Fluorescence
Inscription(s)
Pointed
EXCELLENT
EXCELLENT
NONE
 731535780

Comments:
IDEAL CUT ROUND BRILLIANT