



ELECTRONIC COPY

731513161
Report verification at igi.org

DIAMOND REPORT

September 19, 2025
IGI Report Number **731513161**
Description **NATURAL DIAMOND**
Shape and Cutting Style **ROUND BRILLIANT**
Measurements **11.49 - 11.59 X 7.23 MM**

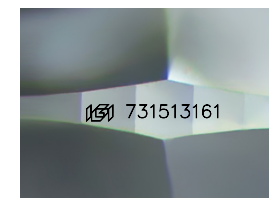
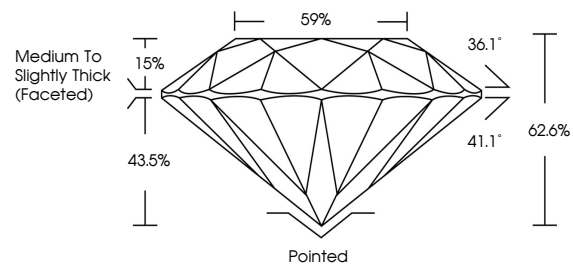
GRADING RESULTS

Carat Weight **6.08 CARATS**
Color Grade **H**
Clarity Grade **SI 2**
Cut Grade **EXCELLENT**

ADDITIONAL GRADING INFORMATION

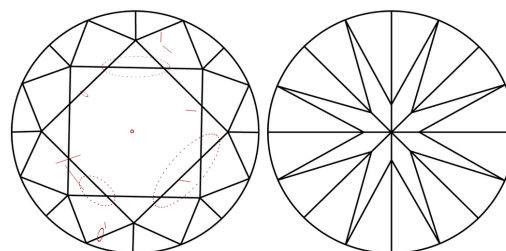
Polish **EXCELLENT**
Symmetry **EXCELLENT**
Fluorescence **VERY SLIGHT**
Inscription(s) **731513161**

PROPORTIONS



Sample Image Used

CLARITY CHARACTERISTICS



KEY TO SYMBOLS

Red symbols indicate internal characteristics.
Green symbols indicate external characteristics.

COLOR

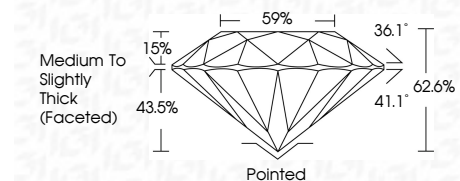
| D - F | G - J | K - M | N - R | S - Z | FANCY |
|-----------|----------------|-----------------|------------------|-------------|-------|
| Colorless | Near Colorless | Slightly Tinted | Very Light Color | Light Color | |

CLARITY

| IF | VVS ¹⁻² | VS ¹⁻² | SI ¹⁻² | I ¹⁻³ |
|---------------------|-----------------------------|------------------------|-------------------|------------------|
| Internally Flawless | Very Very Slightly Included | Very Slightly Included | Slightly Included | Included |



September 19, 2025
IGI Report Number **731513161**
Description **NATURAL DIAMOND**
Shape and Cutting Style **ROUND BRILLIANT**
Measurements **11.49 - 11.59 X 7.23 MM**
GRADING RESULTS
Carat Weight **6.08 CARATS**
Color Grade **H**
Clarity Grade **SI 2**
Cut Grade **EXCELLENT**



ADDITIONAL GRADING INFORMATION

Polish **EXCELLENT**
Symmetry **EXCELLENT**
Fluorescence **VERY SLIGHT**
Inscription(s) **731513161**



IGI



September 19, 2025
IGI Report No 731513161
ROUND BRILLIANT
6.08 CARATS
H
SI 2
EXCELLENT
62.6%
59%
Medium To Slightly Thick (Faceted)
Pointed
EXCELLENT
EXCELLENT
VERY SLIGHT
IGI 731513161