



**ELECTRONIC COPY**

729562139  
Report verification at [igi.org](http://igi.org)



August 26, 2025  
IGI Report Number **729562139**  
Description **NATURAL DIAMOND**  
Shape and Cutting Style **CUT CORNERED  
RECTANGULAR MODIFIED  
BRILLIANT**  
Measurements **6.47 X 5.10 X 3.43 MM**  
**GRADING RESULTS**  
Carat Weight **1.03 CARAT**  
Color Grade **G**  
Clarity Grade **VVS 1**  
Cut Grade **VERY GOOD**

**DIAMOND REPORT**

August 26, 2025  
IGI Report Number **729562139**  
Description **NATURAL DIAMOND**  
Shape and Cutting Style **CUT CORNERED RECTANGULAR  
MODIFIED BRILLIANT**  
Measurements **6.47 X 5.10 X 3.43 MM**

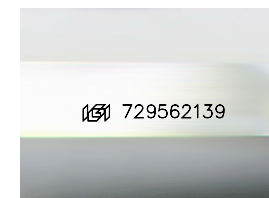
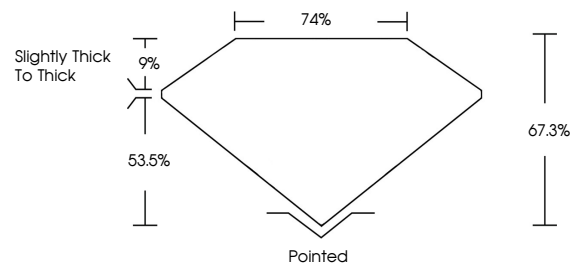
**GRADING RESULTS**

Carat Weight **1.03 CARAT**  
Color Grade **G**  
Clarity Grade **VVS 1**  
Cut Grade **VERY GOOD**

**ADDITIONAL GRADING INFORMATION**

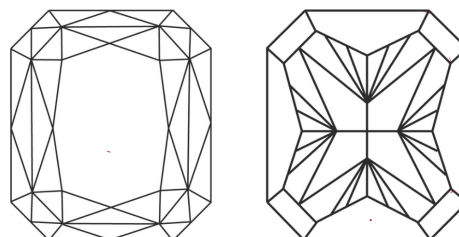
Polish **VERY GOOD**  
Symmetry **VERY GOOD**  
Fluorescence **STRONG**  
Inscription(s) **729562139**

**PROPORTIONS**



Sample Image Used

**CLARITY CHARACTERISTICS**



**KEY TO SYMBOLS**

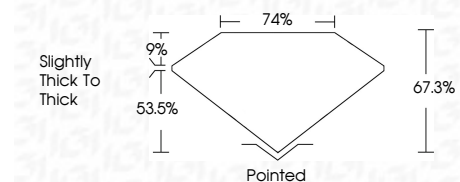
Red symbols indicate internal characteristics.  
Green symbols indicate external characteristics.

**COLOR**

D - F	G - J	K - M	N - R	S - Z	FANCY
Colorless	Near Colorless	Slightly Tinted	Very Light Color	Light Color	

**CLARITY**

IF	VVS <sup>1-2</sup>	VS <sup>1-2</sup>	SI <sup>1-2</sup>	I <sup>1-3</sup>
Internally Flawless	Very Very Slightly Included	Very Slightly Included	Slightly Included	Included



**ADDITIONAL GRADING INFORMATION**

Polish **VERY GOOD**  
Symmetry **VERY GOOD**  
Fluorescence **STRONG**  
Inscription(s) **729562139**



**IGI**



August 26, 2025  
IGI Report No 729562139  
**CUT CORNERED RECT. MODIFIED BRILLIANT**  
6.47 X 5.10 X 3.43 MM  
Carat Weight **1.03 CARAT**  
Color Grade **G**  
Clarity Grade **VVS 1**  
Depth **53.5%**  
Table **9%**  
Girdle **74%**  
Slightly Thick to Thick  
Culet **Pointed**  
Polish **VERY GOOD**  
Symmetry **VERY GOOD**  
Fluorescence **STRONG**  
Inscriptions(s) **729562139**