



**ELECTRONIC COPY**

729536776  
Report verification at [igi.org](http://igi.org)



April 30, 2026

IGI Report Number **729536776**

Description **NATURAL DIAMOND**

Shape and Cutting Style **PRINCESS CUT**

Measurements **6.15 X 6.11 X 4.70 MM**

**GRADING RESULTS**

Carat Weight **1.50 CARAT**

Color Grade **K**

Clarity Grade **VS 2**

Cut Grade **VERY GOOD**

April 30, 2026  
IGI Report Number **729536776**  
Description **NATURAL DIAMOND**  
Shape and Cutting Style **PRINCESS CUT**  
Measurements **6.15 X 6.11 X 4.70 MM**

**GRADING RESULTS**

Carat Weight **1.50 CARAT**

Color Grade **K**

Clarity Grade **VS 2**

Cut Grade **VERY GOOD**

**ADDITIONAL GRADING INFORMATION**

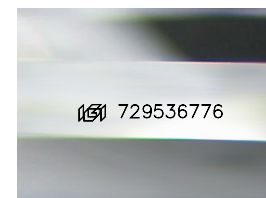
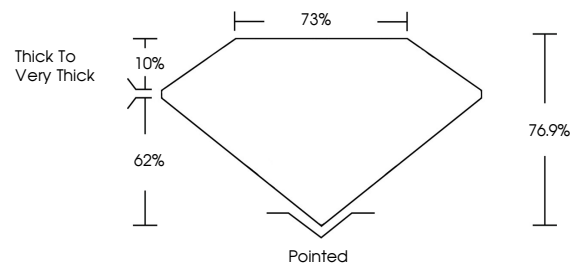
Polish **EXCELLENT**

Symmetry **VERY GOOD**

Fluorescence **NONE**

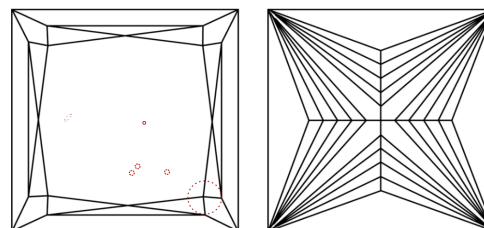
Inscription(s) **729536776**

**PROPORTIONS**



Sample Image Used

**CLARITY CHARACTERISTICS**



**KEY TO SYMBOLS**

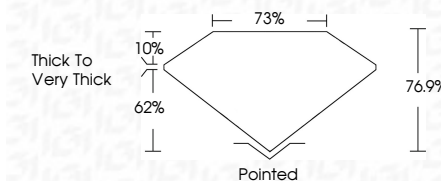
Red symbols indicate internal characteristics.  
Green symbols indicate external characteristics.

**COLOR**

D - F	G - J	K - M	N - R	S - Z	FANCY
Colorless	Near Colorless	Slightly Tinted	Very Light Color	Light Color	

**CLARITY**

FL	IF	VVS <sup>1-2</sup>	VS <sup>1-2</sup>	SI <sup>1-2</sup>	I <sup>1-3</sup>
Flawless	Internally Flawless	Very Very Slightly Included	Very Slightly Included	Slightly Included	Included



**ADDITIONAL GRADING INFORMATION**

Polish **EXCELLENT**

Symmetry **VERY GOOD**

Fluorescence **NONE**

Inscription(s) **729536776**



**IGI**



April 30, 2026  
IGI Report No 729536776  
**PRINCESS CUT**  
6.15 X 6.11 X 4.70 MM  
1.50 CARAT  
K  
VS 2  
VERY GOOD  
76.9%  
73%  
Thick To Very Thick  
Pointed  
EXCELLENT  
VERY GOOD  
NONE  
 729536776