



**ELECTRONIC COPY**

729536751  
Report verification at [igi.org](http://igi.org)



May 7, 2026

IGI Report Number **729536751**

Description **NATURAL DIAMOND**

Shape and Cutting Style **SQUARE CUSHION MODIFIED  
BRILLIANT**

Measurements **6.64 X 6.36 X 4.49 MM**

**GRADING RESULTS**

Carat Weight **1.80 CARAT**

Color Grade **M**

Clarity Grade **SI 2**

Cut Grade **VERY GOOD**

**DIAMOND REPORT**

May 7, 2026

IGI Report Number **729536751**

Description **NATURAL DIAMOND**

Shape and Cutting Style **SQUARE CUSHION MODIFIED  
BRILLIANT**

Measurements **6.64 X 6.36 X 4.49 MM**

**GRADING RESULTS**

Carat Weight **1.80 CARAT**

Color Grade **M**

Clarity Grade **SI 2**

Cut Grade **VERY GOOD**

**ADDITIONAL GRADING INFORMATION**

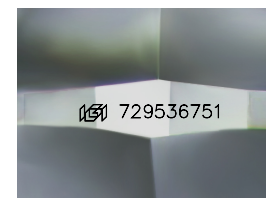
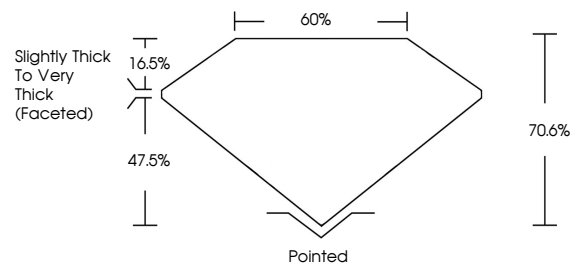
Polish **EXCELLENT**

Symmetry **EXCELLENT**

Fluorescence **NONE**

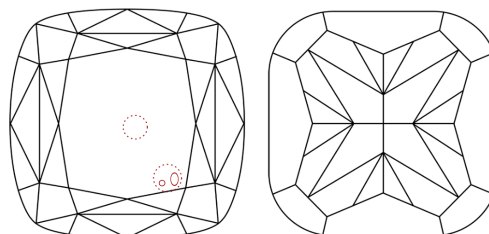
Inscription(s) **729536751**

**PROPORTIONS**



Sample Image Used

**CLARITY CHARACTERISTICS**



**KEY TO SYMBOLS**

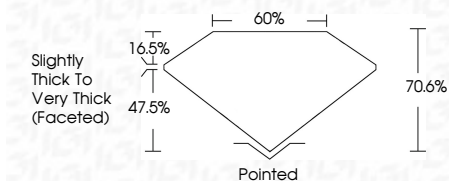
Red symbols indicate internal characteristics.  
Green symbols indicate external characteristics.

**COLOR**

D - F	G - J	K - M	N - R	S - Z	FANCY
Colorless	Near Colorless	Slightly Tinted	Very Light Color	Light Color	

**CLARITY**

FL	IF	VVS <sup>1-2</sup>	VS <sup>1-2</sup>	SI <sup>1-2</sup>	I <sup>1-3</sup>
Flawless	Internally Flawless	Very Very Slightly Included	Very Slightly Included	Slightly Included	Included



**ADDITIONAL GRADING INFORMATION**

Polish **EXCELLENT**

Symmetry **EXCELLENT**

Fluorescence **NONE**

Inscription(s) **729536751**



**IGI**



May 7, 2026  
IGI Report No 729536751  
**SQUARE CUSHION MODIFIED BRILLIANT**  
6.64 X 6.36 X 4.49 MM  
Carat Weight **1.80 CARAT**  
Color Grade **M**  
Clarity Grade **SI 2**  
Depth **70.6%**  
Table **60%**  
Girdle **Slightly Thick to Very Thick (Faceted)**  
Culet **Pointed**  
Polish **EXCELLENT**  
Symmetry **EXCELLENT**  
Fluorescence **NONE**  
Inscription(s) **729536751**