



**ELECTRONIC COPY**

## DIAMOND REPORT

|                         |  |
|-------------------------|--|
| September 11, 2025      |  |
| IGI Report Number       | 729536658                                      |
| Description             | NATURAL DIAMOND                                |
| Shape and Cutting Style | CUT CORNERED RECTANGULAR<br>MODIFIED BRILLIANT |
| Measurements            | 8.92 X 6.88 X 4.81 MM                          |

## GRADING RESULTS

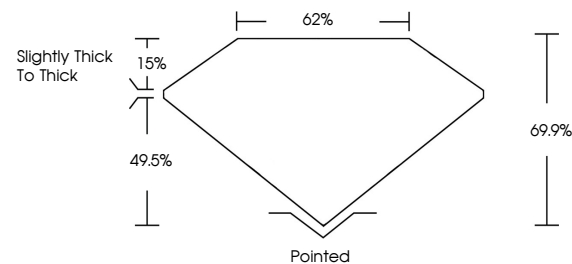
|               |             |
|---------------|-------------|
| Carat Weight  | 2.53 CARATS |
| Color Grade   | G           |
| Clarity Grade | I1          |
| Cut Grade     | VERY GOOD   |

### ADDITIONAL GRADING INFORMATION

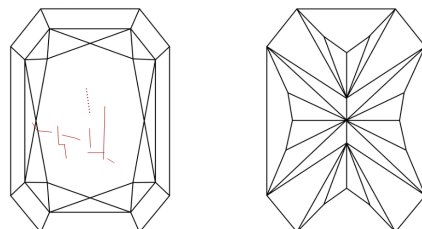
|                |   |
|----------------|---|
| Polish         | EXCELLENT   |
| Symmetry       | EXCELLENT   |
| Fluorescence   | NONE  |
| Inscription(s) |  729536658 |

729536658  
Report verification at [igi.org](https://igi.org)

## PROPORTIONS

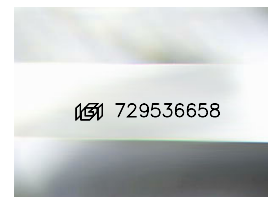


## CLARITY CHARACTERISTICS



## KEY TO SYMBOLS

Red symbols indicate internal characteristics.  
Green symbols indicate external characteristics.



Sample Image Used

**COLOR**

| D - F     | G - J          | K - M           | N - R            | S - Z       | FANCY |
|-----------|----------------|-----------------|------------------|-------------|-------|
| Colorless | Near Colorless | Slightly Tinted | Very Light Color | Light Color |       |

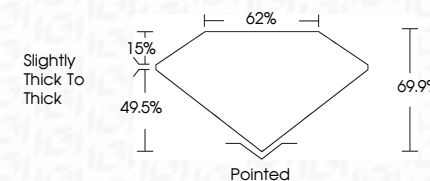
## CLARITY

| IF                  | VVS <sup>1-2</sup>          | VS <sup>1-2</sup>      | SI <sup>1-2</sup> | I <sup>1-3</sup> |
|---------------------|-----------------------------|------------------------|-------------------|------------------|
| Internally Flawless | Very Very Slightly Included | Very Slightly Included | Slightly Included | Included         |

## DIAMOND REPORT



|                         |   |
|-------------------------|---|
| September 11, 2025      |   |
| IGI Report Number       | 729536658   |
| Description             | NATURAL DIAMOND                                   |
| Shape and Cutting Style | CUT CORNERED<br>RECTANGULAR MODIFIED<br>BRILLIANT |
| Measurements            | 8.92 X 6.88 X 4.81 MM                             |
| GRADING RESULTS         |   |
| Carat Weight            | 2.53 CARATS                                       |
| Color Grade             | G   |
| Clarity Grade           | I 1   |
| Cut Grade               | VERY GOOD   |



### ADDITIONAL GRADING INFORMATION

|                |                |
|----------------|----------------|
| Polish         | EXCELLENT      |
| Symmetry       | EXCELLENT      |
| Fluorescence   | NONE           |
| Inscription(s) | (15) 729536658 |



© IGI 2020, International Gemological Institute

FD - 10 20



THIS DOCUMENT WAS PRODUCED WITH THE FOLLOWING SECURITY MEASURES: SPECIAL DOCUMENT PAPER, INK SCREENS, WATERMARK, BACKGROUND DESIGNS, HOLOGRAM AND OTHER SECURITY FEATURES NOT LISTED AND DO EXCEED DOCUMENT SECURITY INDUSTRY GUIDELINES

**www.igi.org**

|   |                      |                                |
|---|----------------------|--------------------------------|
| <b>September 11, 2025</b>                   | <b>2.63 CARATS</b>   | <b>G</b>                       |
| <b>GI Report No 79834558</b>                | <b>Color Grade</b>   | <b>I</b>                       |
| <b>CT CORNERED RECT. MODIFIED BRILLIANT</b> | <b>Clarity Grade</b> | <b>VERY GOOD</b>               |
| <b>SI 2 X 2 X 4.88 X 4.81 MM</b>            | <b>Cut Weight</b>    | <b>65%</b>                     |
|   |                      | <b>62%</b>                     |
|   |                      | <b>Slightly Thick to Thick</b> |
|   |                      |                                |
|   |                      | <b>Patched</b>                 |
|   |                      | <b>EXCELLENT</b>               |
|   |                      | <b>EXCELLENT</b>               |
|   |                      | <b>NONE</b>                    |
|   |                      | <b>Fluorescence</b>            |