



ELECTRONIC COPY

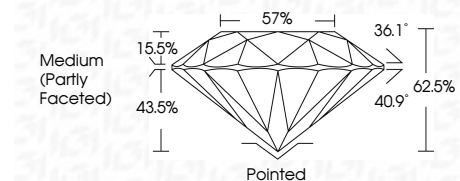
729529361
Report verification at igi.org



August 28, 2025
IGI Report Number **729529361**
Description **NATURAL DIAMOND**
Shape and Cutting Style **ROUND BRILLIANT**
Measurements **11.22 - 11.25 X 7.03 MM**

GRADING RESULTS

Carat Weight **5.51 CARATS**
Color Grade **J**
Clarity Grade **VS 2**
Cut Grade **EXCELLENT**



ADDITIONAL GRADING INFORMATION

Polish **EXCELLENT**
Symmetry **EXCELLENT**
Fluorescence **NONE**
Inscription(s) **(IGI) 729529361**

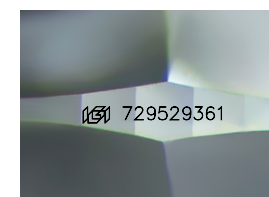
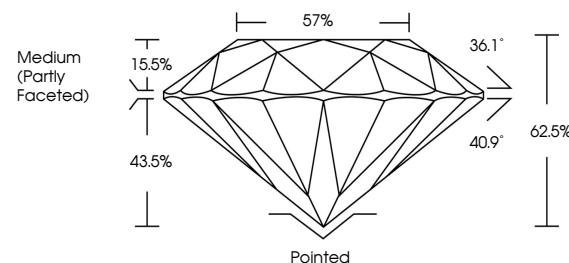


IGI



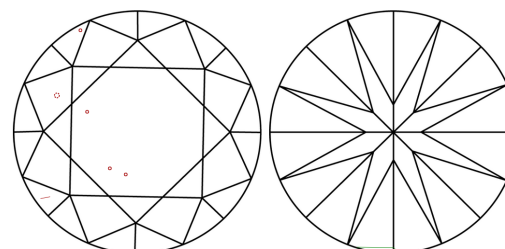
August 28, 2025
IGI Report No 729529361
ROUND BRILLIANT
5.51 CARATS
J
Color Grade **EXCELLENT**
VS 2
Depth **62.5%**
Table **57%**
Girdle **Medium (Partly Faceted)**
Culet **Pointed**
Polish **EXCELLENT**
Symmetry **EXCELLENT**
Fluorescence **NONE**
Inscription(s) **(IGI) 729529361**

PROPORTIONS



Sample Image Used

CLARITY CHARACTERISTICS



KEY TO SYMBOLS

Red symbols indicate internal characteristics.
Green symbols indicate external characteristics.

COLOR

D - F	G - J	K - M	N - R	S - Z	FANCY
Colorless	Near Colorless	Slightly Tinted	Very Light Color	Light Color	

CLARITY

IF	VVS ¹⁻²	VS ¹⁻²	SI ¹⁻²	I ¹⁻³
Internally Flawless	Very Very Slightly Included	Very Slightly Included	Slightly Included	Included

August 28, 2025
IGI Report No 729529361
ROUND BRILLIANT

5.51 CARATS
J
Color Grade **EXCELLENT**
VS 2
Depth **62.5%**
Table **57%**
Girdle **Medium (Partly Faceted)**
Culet **Pointed**
Polish **EXCELLENT**
Symmetry **EXCELLENT**
Fluorescence **NONE**
Inscription(s) **(IGI) 729529361**