



**ELECTRONIC COPY**

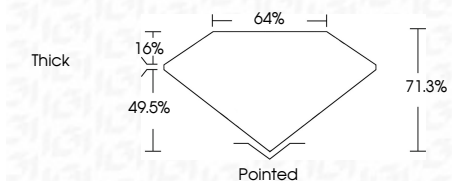
728551252  
Report verification at igi.org



September 4, 2025  
IGI Report Number **728551252**  
Description **NATURAL DIAMOND**  
Shape and Cutting Style **SQUARE EMERALD CUT**  
Measurements **6.14 X 5.93 X 4.23 MM**

**GRADING RESULTS**

Carat Weight **1.51 CARAT**  
Color Grade **G**  
Clarity Grade **VVS 2**  
Cut Grade **VERY GOOD**



**ADDITIONAL GRADING INFORMATION**

Polish **EXCELLENT**  
Symmetry **EXCELLENT**  
Fluorescence **NONE**  
Inscription(s) **IGI 728551252**



September 4, 2025  
IGI Report No. 728551252  
**SQUARE EMERALD CUT**  
6.14 X 5.93 X 4.23 MM  
1.51 CARAT  
G  
VVS 2  
VERY GOOD  
71.3%  
64%  
Thick  
Pointed  
EXCELLENT  
EXCELLENT  
NONE  
IGI 728551252

**DIAMOND REPORT**

September 4, 2025  
IGI Report Number **728551252**  
Description **NATURAL DIAMOND**  
Shape and Cutting Style **SQUARE EMERALD CUT**  
Measurements **6.14 X 5.93 X 4.23 MM**

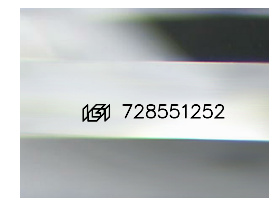
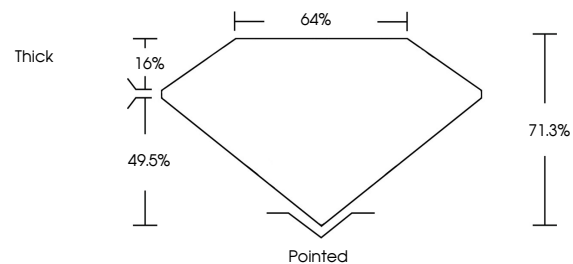
**GRADING RESULTS**

Carat Weight **1.51 CARAT**  
Color Grade **G**  
Clarity Grade **VVS 2**  
Cut Grade **VERY GOOD**

**ADDITIONAL GRADING INFORMATION**

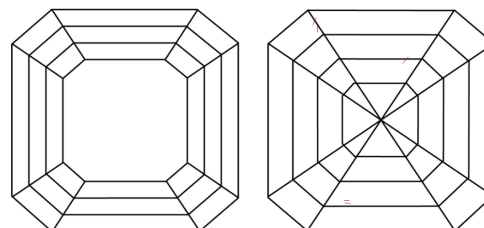
Polish **EXCELLENT**  
Symmetry **EXCELLENT**  
Fluorescence **NONE**  
Inscription(s) **IGI 728551252**

**PROPORTIONS**



Sample Image Used

**CLARITY CHARACTERISTICS**



**KEY TO SYMBOLS**

Red symbols indicate internal characteristics.  
Green symbols indicate external characteristics.

**COLOR**

D - F	G - J	K - M	N - R	S - Z	FANCY
Colorless	Near Colorless	Slightly Tinted	Very Light Color	Light Color	

**CLARITY**

IF	VVS <sup>1-2</sup>	VS <sup>1-2</sup>	SI <sup>1-2</sup>	I <sup>1-3</sup>
Internally Flawless	Very Very Slightly Included	Very Slightly Included	Slightly Included	Included

