



ELECTRONIC COPY

DIAMOND REPORT

September 3, 2025	
IGI Report Number	728527675
Description	NATURAL DIAMOND
Shape and Cutting Style	CUT CORNERED RECTANGULAR MODIFIED BRILLIANT
Measurements	6.59 X 4.83 X 3.38 MM

GRADING RESULTS

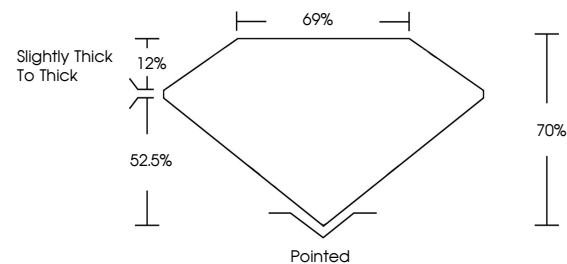
Carat Weight	1.01 CARAT
Color Grade	F
Clarity Grade	SI 2
Cut Grade	VERY GOOD

ADDITIONAL GRADING INFORMATION

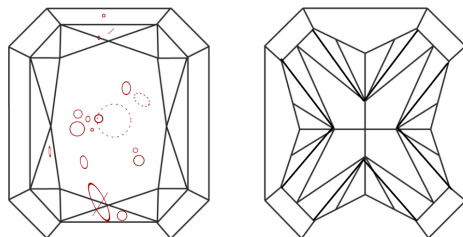
Polish	EXCELLENT
Symmetry	EXCELLENT
Fluorescence	NONE
Inscription(s)	151 728527675

728527675
Report verification at igi.org

PROPORTIONS

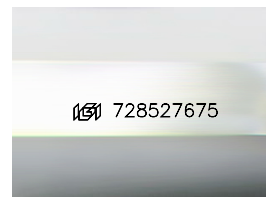


CLARITY CHARACTERISTICS



KEY TO SYMBOLS

Red symbols indicate internal characteristics.
Green symbols indicate external characteristics.



Sample Image Used

COLOR

D - F	G - J	K - M	N - R	S - Z	FANCY
Colorless	Near Colorless	Slightly Tinted	Very Light Color	Light Color	

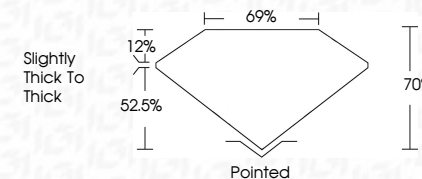
CLARITY

IF	VVS ¹⁻²	VS ¹⁻²	SI ¹⁻²	I ¹⁻³
Internally Flawless	Very Very Slightly Included	Very Slightly Included	Slightly Included	Included

DIAMOND REPORT



September 3, 2025	
IGI Report Number	728527675
Description	NATURAL DIAMOND
Shape and Cutting Style	CUT CORNERED RECTANGULAR MODIFIED BRILLIANT
Measurements	6.59 X 4.83 X 3.38 MM
GRADING RESULTS	
Carat Weight	1.01 CARAT
Color Grade	F
Clarity Grade	SI 2
Cut Grade	VERY GOOD



ADDITIONAL GRADING INFORMATION

Polish	EXCELLENT
Symmetry	EXCELLENT
Fluorescence	NONE
Inscription(s)	163 728527675



IG



© IGI 2020, International Gemological Institute

FD - 10 20



THIS DOCUMENT WAS PRODUCED WITH THE FOLLOWING SECURITY MEASURES: SPECIAL DOCUMENT PAPER, INK SCREENS, WATERMARK, BACKGROUND DESIGNS, HOLOGRAM AND OTHER SECURITY FEATURES NOT LISTED AND DO EXCEED DOCUMENT SECURITY INDUSTRY GUIDELINES

www.igi.org

Sepctember 3, 2005
Cert No 798273/5
REPORT ON CUT CORNERED RECT. MODIFIED BRILLIANT
DIAMETER 6.59 X 4.83 X 3.38 MM
Carat Weight 1.01 CARAT
Color Grade F
Clarity Grade S I 2
Cut Grade VERY GOOD
Depth % 70%
Table % 69%
Girdle Slightly Thick to Thick
Culet Pointed
Polish EXCELLENT
Symmetry EXCELLENT
Fluorescence NONE