



ELECTRONIC COPY

728525541
Report verification at igi.org



August 23, 2025

IGI Report Number **728525541**

Description **NATURAL DIAMOND**

Shape and Cutting Style **ROUND BRILLIANT**

Measurements **12.21 - 12.28 X 7.79 MM**

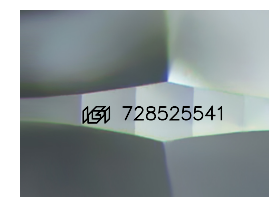
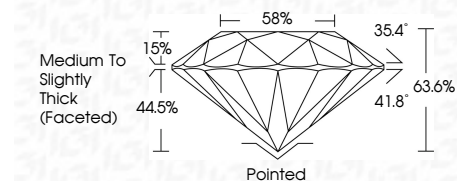
GRADING RESULTS

Carat Weight **7.31 CARATS**

Color Grade **M**

Clarity Grade **SI 2**

Cut Grade **EXCELLENT**



Sample Image Used

ADDITIONAL GRADING INFORMATION

| | |
|----------------|----------------------|
| Polish | EXCELLENT |
| Symmetry | EXCELLENT |
| Fluorescence | SLIGHT |
| Inscription(s) | IGI 728525541 |



| | | | | | | | | | | | | | | | |
|-----------------|-------------------------|-----------------|-------------------------|--------------|-------------|---------------|-----------|-------|-------|------------------------------------|---------|-----------|-----------|--------------|----------------|
| August 23, 2025 | IGI Report No 728525541 | ROUND BRILLIANT | 12.21 - 12.28 X 7.79 MM | 7.31 CARATS | M | SI 2 | EXCELLENT | 63.6% | 58% | Medium To Slightly Thick (Faceted) | Pointed | EXCELLENT | EXCELLENT | SLIGHT | IGI 728525541 |
| | | | | Carat Weight | Color Grade | Clarity Grade | Cut Grade | Depth | Table | Girdle | Culet | Polish | Symmetry | Fluorescence | Inscription(s) |

DIAMOND REPORT

August 23, 2025

IGI Report Number **728525541**

Description **NATURAL DIAMOND**

Shape and Cutting Style **ROUND BRILLIANT**

Measurements **12.21 - 12.28 X 7.79 MM**

GRADING RESULTS

Carat Weight **7.31 CARATS**

Color Grade **M**

Clarity Grade **SI 2**

Cut Grade **EXCELLENT**

ADDITIONAL GRADING INFORMATION

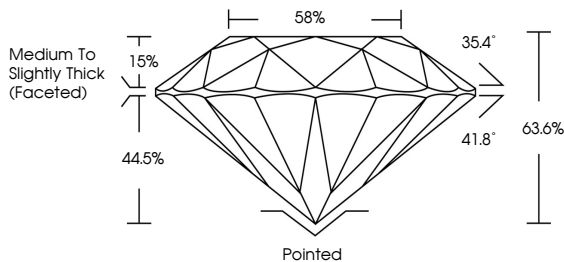
Polish **EXCELLENT**

Symmetry **EXCELLENT**

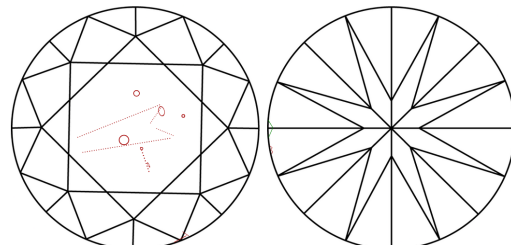
Fluorescence **SLIGHT**

Inscription(s) **IGI 728525541**

PROPORTIONS



CLARITY CHARACTERISTICS



KEY TO SYMBOLS

Red symbols indicate internal characteristics.
Green symbols indicate external characteristics.

COLOR

| D - F | G - J | K - M | N - R | S - Z | FANCY |
|-----------|----------------|-----------------|------------------|-------------|-------|
| Colorless | Near Colorless | Slightly Tinted | Very Light Color | Light Color | |

CLARITY

| IF | VVS ¹⁻² | VS ¹⁻² | SI ¹⁻² | I ¹⁻³ |
|---------------------|-----------------------------|------------------------|-------------------|------------------|
| Internally Flawless | Very Very Slightly Included | Very Slightly Included | Slightly Included | Included |

