



ELECTRONIC COPY

728524674
Report verification at igi.org



February 20, 2026
IGI Report Number **728524674**
Description **NATURAL DIAMOND**
Shape and Cutting Style **ROUND BRILLIANT**
Measurements **16.01 - 16.15 X 9.94 MM**
GRADING RESULTS
Carat Weight **16.01 CARATS**
Color Grade **J**
Clarity Grade **INTERNALLY FLAWLESS**
Cut Grade **EXCELLENT**

February 20, 2026
IGI Report Number **728524674**
Description **NATURAL DIAMOND**
Shape and Cutting Style **ROUND BRILLIANT**
Measurements **16.01 - 16.15 X 9.94 MM**

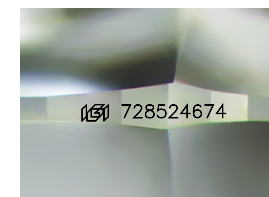
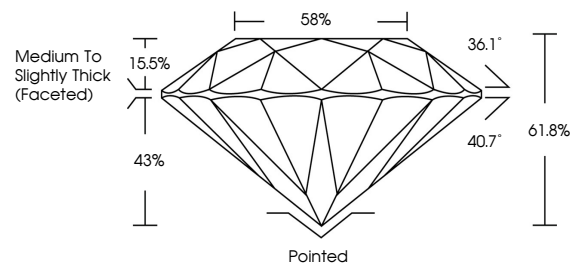
GRADING RESULTS

Carat Weight **16.01 CARATS**
Color Grade **J**
Clarity Grade **INTERNALLY FLAWLESS**
Cut Grade **EXCELLENT**

ADDITIONAL GRADING INFORMATION

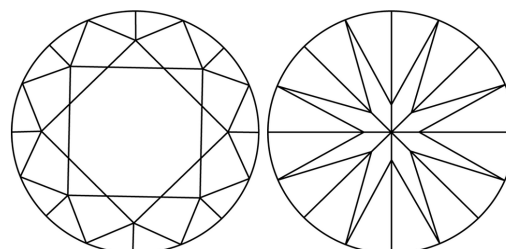
Polish **EXCELLENT**
Symmetry **EXCELLENT**
Fluorescence **SLIGHT**
Inscription(s) **728524674**
Comments: IDEAL CUT ROUND BRILLIANT

PROPORTIONS



Sample Image Used

CLARITY CHARACTERISTICS



KEY TO SYMBOLS

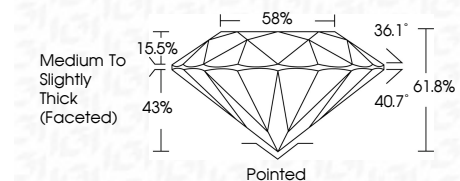
Red symbols indicate internal characteristics.
Green symbols indicate external characteristics.

COLOR

D - F	G - J	K - M	N - R	S - Z	FANCY
Colorless	Near Colorless	Slightly Tinted	Very Light Color	Light Color	

CLARITY

FL	IF	VVS ¹⁻²	VS ¹⁻²	SI ¹⁻²	I ¹⁻³
Flawless	Internally Flawless	Very Very Slightly Included	Very Slightly Included	Slightly Included	Included



ADDITIONAL GRADING INFORMATION

Polish **EXCELLENT**
Symmetry **EXCELLENT**
Fluorescence **SLIGHT**
Inscription(s) **728524674**
Comments: IDEAL CUT ROUND BRILLIANT



IGI



February 20, 2026
IGI Report No 728524674
ROUND BRILLIANT
16.01 - 16.15 X 9.94 MM
16.01 CARATS
J
Color Grade **EXCELLENT**
Clarity Grade **EXCELLENT**
Depth 61.8%
Table 15.5%
Girdle **Medium To Slightly Thick (Faceted)**
Culet **Pointed**
Polish **EXCELLENT**
Symmetry **EXCELLENT**
Fluorescence **SLIGHT**
Inscription(s) 728524674
Comments: **IDEAL CUT ROUND BRILLIANT**