



ELECTRONIC COPY

DIAMOND REPORT

November 8, 2025	
IGI Report Number	728524405
Description	NATURAL DIAMOND
Shape and Cutting Style	ROUND BRILLIANT
Measurements	7.23 - 7.30 X 4.53 MM

GRADING RESULTS

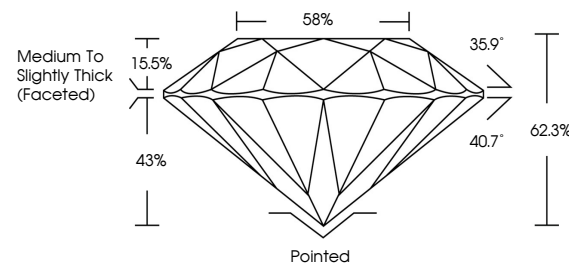
Carat Weight	1.50 CARAT
Color Grade	G
Clarity Grade	VS 2
Cut Grade	EXCELLENT

ADDITIONAL GRADING INFORMATION

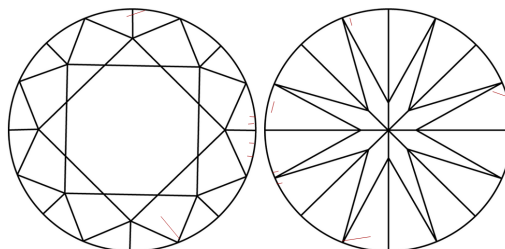
Polish	EXCELLENT
Symmetry	EXCELLENT
Fluorescence	NONE
Inscription(s)	 728524405
Comments: IDEAL CUT ROUND BRILLIANT	

728524405
Report verification at igi.org

PROPORTIONS

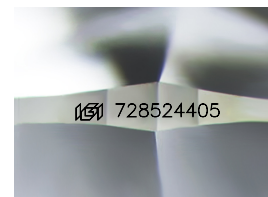


CLARITY CHARACTERISTICS



KEY TO SYMBOLS

Red symbols indicate internal characteristics.
Green symbols indicate external characteristics.



Sample Image Used

COLOR

D - F	G - J	K - M	N - R	S - Z	FANCY
Colorless	Near Colorless	Slightly Tinted	Very Light Color	Light Color	

CLARITY

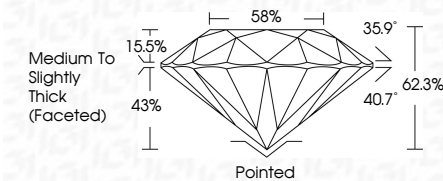
IF	VVS ¹⁻²	VS ¹⁻²	SI ¹⁻²	I ¹⁻³
Internally Flawless	Very Very Slightly Included	Very Slightly Included	Slightly Included	Included



November 8, 2025	
IGI Report Number	728524405
Description	NATURAL DIAMOND
Shape and Cutting Style	ROUND BRILLIANT
Measurements	7.23 - 7.30 X 4.53 MM

GRADING RESULTS

Carat Weight	1.50 CARAT
Color Grade	G
Clarity Grade	VS 2
Cut Grade	EXCELLENT



ADDITIONAL GRADING INFORMATION

Polish	EXCELLENT
Symmetry	EXCELLENT
Fluorescence	NONE
Inscription(s)	(G) 728524405
Comments: IDEAL CUT ROUND BRILLIANT	



© IGI 2020, International Gemological Institute

FD - 10 20



THIS DOCUMENT WAS PRODUCED WITH THE FOLLOWING SECURITY MEASURES: SPECIAL DOCUMENT PAPER, INK SCREENS, WATERMARK, BACKGROUND DESIGNS, HOLOGRAM AND OTHER SECURITY FEATURES NOT LISTED AND DO EXCEED DOCUMENT SECURITY INDUSTRY GUIDELINES

www.igi.org

