



INTERNATIONAL GEMOLOGICAL INSTITUTE

DIAMOND REPORT

August 18, 2025

IGI Report Number

728512994

Description

NATURAL DIAMOND

Shape and Cutting Style

ROUND BRILLIANT

Measurements

5.18 - 5.21 X 3.24 MM

GRADING RESULTS

Carat Weight

0.54 CARAT

Color Grade

I

Clarity Grade

VVS 1

Cut Grade

EXCELLENT

ADDITIONAL GRADING INFORMATION

Polish

EXCELLENT

Symmetry

EXCELLENT

Fluorescence

NONE

Identification Features

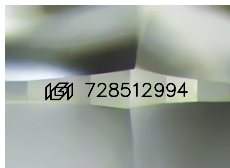
NEEDLE, FEATHER, PINPOINT

Inscription(s)

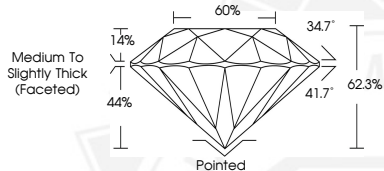
IGI 728512994

Comments: IDEAL CUT ROUND BRILLIANT

ELECTRONIC COPY



Sample Image Used



THIS DOCUMENT WAS PRODUCED WITH THE FOLLOWING SECURITY MEASURES: SPECIAL DOCUMENT PAPER, INK SCREENS, WATERMARK, BACKGROUND DESIGNS, HOLOGRAM AND OTHER SECURITY FEATURES NOT LISTED AND DO EXCEED DOCUMENT SECURITY INDUSTRY GUIDELINES.

For terms & conditions and to verify this report, please visit www.igi.org



August 18, 2025

IGI Report Number 728512994

ROUND BRILLIANT

NATURAL DIAMOND

5.18 - 5.21 X 3.24 MM

Carat Weight 0.54 CARAT

Color Grade I

Clarity Grade VVS 1

Cut Grade EXCELLENT

Polish EXCELLENT

Symmetry EXCELLENT

Fluorescence NONE

Inscription(s) IGI 728512994

Comments: IDEAL CUT ROUND

BRILLIANT



August 18, 2025

IGI Report Number 728512994

ROUND BRILLIANT

NATURAL DIAMOND

5.18 - 5.21 X 3.24 MM

Carat Weight 0.54 CARAT

Color Grade I

Clarity Grade VVS 1

Cut Grade EXCELLENT

Polish EXCELLENT

Symmetry EXCELLENT

Fluorescence NONE

Inscription(s) IGI 728512994

Comments: IDEAL CUT ROUND

BRILLIANT