



# INTERNATIONAL GEMOLOGICAL INSTITUTE

## DIAMOND REPORT

August 20, 2025

IGI Report Number

728512914

Description

NATURAL DIAMOND

Shape and Cutting Style

ROUND BRILLIANT

Measurements

6.12 - 6.19 X 3.86 MM

### GRADING RESULTS

Carat Weight

0.90 CARAT

Color Grade

K

Clarity Grade

VS 2

Cut Grade

EXCELLENT

### ADDITIONAL GRADING INFORMATION

Polish

EXCELLENT

Symmetry

EXCELLENT

Fluorescence

NONE

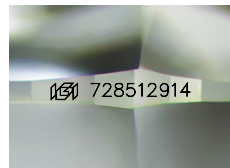
Identification Features

FEATHER, CRYSTAL

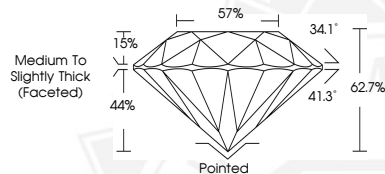
Inscription(s)

728512914

ELECTRONIC COPY



Sample Image Used



THIS DOCUMENT WAS PRODUCED WITH THE FOLLOWING SECURITY MEASURES: SPECIAL DOCUMENT PAPER, INK SCREENS, WATERMARK, BACKGROUND DESIGNS, HOLOGRAM AND OTHER SECURITY FEATURES NOT LISTED AND DO EXCEED DOCUMENT SECURITY INDUSTRY GUIDELINES.

For terms & conditions and to verify this report, please visit [www.igi.org](http://www.igi.org)



August 20, 2025

IGI Report Number 728512914

ROUND BRILLIANT

NATURAL DIAMOND

6.12 - 6.19 X 3.86 MM

Carat Weight 0.90 CARAT

Color Grade K

Clarity Grade VS 2

Cut Grade EXCELLENT

Polish EXCELLENT

Symmetry EXCELLENT

Fluorescence NONE

Inscription(s) 728512914



August 20, 2025

IGI Report Number 728512914

ROUND BRILLIANT

NATURAL DIAMOND

6.12 - 6.19 X 3.86 MM

Carat Weight 0.90 CARAT

Color Grade K

Clarity Grade VS 2

Cut Grade EXCELLENT

Polish EXCELLENT

Symmetry EXCELLENT

Fluorescence NONE

Inscription(s) 728512914