



**DIAMOND REPORT**

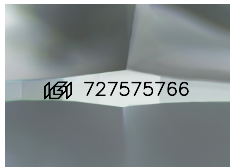
August 23, 2025  
 IGI Report Number **727575766**  
 Description **NATURAL DIAMOND**  
 Shape and Cutting Style **ROUND BRILLIANT**  
 Measurements **5.16 - 5.20 X 3.18 MM**

**GRADING RESULTS**

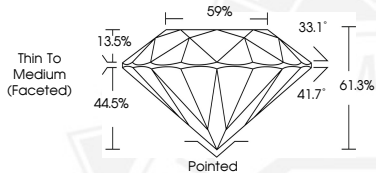
Carat Weight **0.52 CARAT**  
 Color Grade **F**  
 Clarity Grade **VS 2**  
 Cut Grade **EXCELLENT**

**ADDITIONAL GRADING INFORMATION**

Polish **EXCELLENT**  
 Symmetry **EXCELLENT**  
 Fluorescence **NONE**  
 Identification Features **CLOUD, CRYSTAL**  
 Inscription(s) **IGI 727575766**



Sample Image Used



August 23, 2025  
 IGI Report Number **727575766**  
 ROUND BRILLIANT  
 NATURAL DIAMOND  
 5.16 - 5.20 X 3.18 MM  
 Carat Weight **0.52 CARAT**  
 Color Grade **F**  
 Clarity Grade **VS 2**  
 Cut Grade **EXCELLENT**  
 Polish **EXCELLENT**  
 Symmetry **EXCELLENT**  
 Fluorescence **NONE**  
 Inscription(s) **IGI 727575766**



August 23, 2025  
 IGI Report Number **727575766**  
 ROUND BRILLIANT  
 NATURAL DIAMOND  
 5.16 - 5.20 X 3.18 MM  
 Carat Weight **0.52 CARAT**  
 Color Grade **F**  
 Clarity Grade **VS 2**  
 Cut Grade **EXCELLENT**  
 Polish **EXCELLENT**  
 Symmetry **EXCELLENT**  
 Fluorescence **NONE**  
 Inscription(s) **IGI 727575766**



THIS DOCUMENT WAS PRODUCED WITH THE FOLLOWING SECURITY MEASURES: SPECIAL DOCUMENT PAPER, INK SCREENS, WATERMARK, BACKGROUND DESIGNS, HOLOGRAM AND OTHER SECURITY FEATURES NOT LISTED AND DO EXCEED DOCUMENT SECURITY INDUSTRY GUIDELINES.