



**ELECTRONIC COPY**

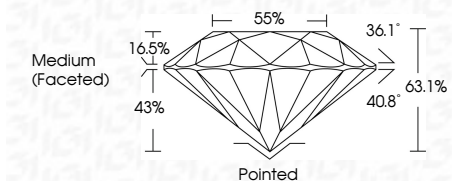
727566408  
Report verification at [igi.org](http://igi.org)



October 7, 2025  
IGI Report Number **727566408**  
Description **NATURAL DIAMOND**  
Shape and Cutting Style **ROUND BRILLIANT**  
Measurements **6.73 - 6.78 X 4.27 MM**

**GRADING RESULTS**

Carat Weight **1.20 CARAT**  
Color Grade **I**  
Clarity Grade **INTERNALLY FLAWLESS**  
Cut Grade **EXCELLENT**



**ADDITIONAL GRADING INFORMATION**

Polish **EXCELLENT**  
Symmetry **EXCELLENT**  
Fluorescence **NONE**  
Inscription(s) **(IGI) 727566408**



**IGI**

October 7, 2025  
IGI Report No 727566408  
**ROUND BRILLIANT**  
6.73 - 6.78 X 4.27 MM  
Carat Weight **1.20 CARAT**  
Color Grade **I**  
Clarity Grade **EXCELLENT**  
Depth **63.1%**  
Table **55%**  
Girdle **Medium (Faceted)**  
Culet **Pointed**  
Polish **EXCELLENT**  
Symmetry **EXCELLENT**  
Fluorescence **NONE**  
Inscriptions(s) **(IGI) 727566408**

**DIAMOND REPORT**

October 7, 2025  
IGI Report Number **727566408**  
Description **NATURAL DIAMOND**  
Shape and Cutting Style **ROUND BRILLIANT**  
Measurements **6.73 - 6.78 X 4.27 MM**

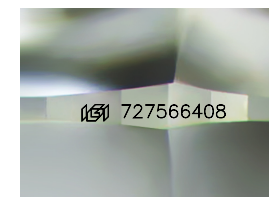
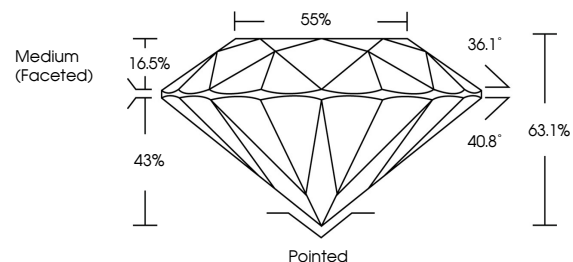
**GRADING RESULTS**

Carat Weight **1.20 CARAT**  
Color Grade **I**  
Clarity Grade **INTERNALLY FLAWLESS**  
Cut Grade **EXCELLENT**

**ADDITIONAL GRADING INFORMATION**

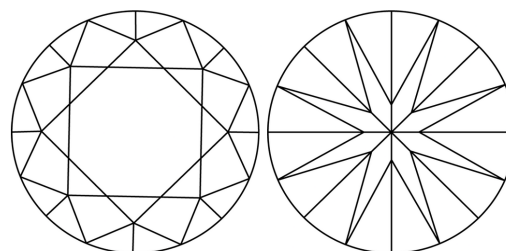
Polish **EXCELLENT**  
Symmetry **EXCELLENT**  
Fluorescence **NONE**  
Inscription(s) **(IGI) 727566408**

**PROPORTIONS**



Sample Image Used

**CLARITY CHARACTERISTICS**



**KEY TO SYMBOLS**

Red symbols indicate internal characteristics.  
Green symbols indicate external characteristics.

**COLOR**

D - F	G - J	K - M	N - R	S - Z	FANCY
Colorless	Near Colorless	Slightly Tinted	Very Light Color	Light Color	

**CLARITY**

IF	VVS <sup>1-2</sup>	VS <sup>1-2</sup>	SI <sup>1-2</sup>	I <sup>1-3</sup>
Internally Flawless	Very Very Slightly Included	Very Slightly Included	Slightly Included	Included

