



ELECTRONIC COPY

DIAMOND REPORT

October 16, 2025	
IGI Report Number	727566093
Description	NATURAL DIAMOND
Shape and Cutting Style	ROUND BRILLIANT
Measurements	9.45 - 9.54 X 5.68 MM

GRADING RESULTS

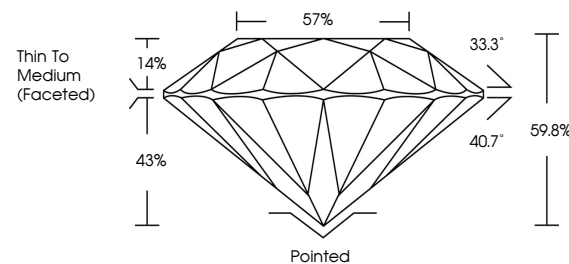
Carat Weight	3.08 CARATS
Color Grade	I
Clarity Grade	VVS 1
Cut Grade	EXCELLENT

ADDITIONAL GRADING INFORMATION

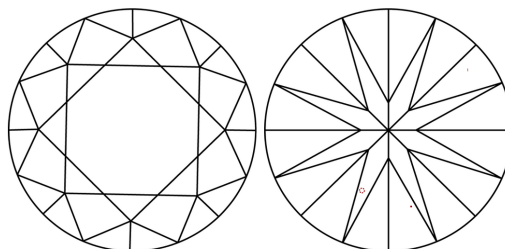
Polish	EXCELLENT
Symmetry	EXCELLENT
Fluorescence	NONE
Inscription(s)	 727566093
Comments: IDEAL CUT ROUND BRILLIANT	

727566093
Report verification at igi.org

PROPORTIONS

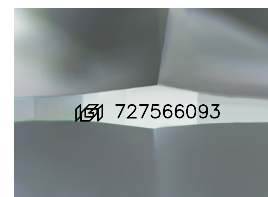


CLARITY CHARACTERISTICS



KEY TO SYMBOLS

Red symbols indicate internal characteristics.
Green symbols indicate external characteristics.



Sample Image Used

COLOR

D - F	G - J	K - M	N - R	S - Z	FANCY
Colorless	Near Colorless	Slightly Tinted	Very Light Color	Light Color	

CLARITY

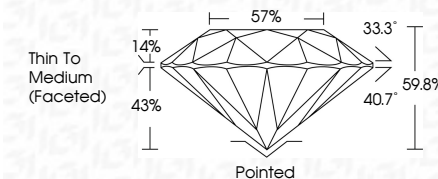
IF	VVS ¹⁻²	VS ¹⁻²	SI ¹⁻²	I ¹⁻³
Internally Flawless	Very Very Slightly Included	Very Slightly Included	Slightly Included	Included



October 16, 2025	
IGI Report Number	727566093
Description	NATURAL DIAMOND
Shape and Cutting Style	ROUND BRILLIANT
Measurements	9.45 - 9.54 X 5.68 MM

GRADING RESULTS

Carat Weight	3.08 CARATS
Color Grade	I
Clarity Grade	VVS 1
Cut Grade	EXCELLENT



ADDITIONAL GRADING INFORMATION

Polish	EXCELLENT
Symmetry	EXCELLENT
Fluorescence	NONE
Inscription(s)	(G) 727566093
Comments: IDEAL CUT ROUND BRILLIANT	



© IGI 2020, International Gemological Institute

FD - 10 20



THIS DOCUMENT WAS PRODUCED WITH THE FOLLOWING SECURITY MEASURES: SPECIAL DOCUMENT PAPER, INK SCREENS, WATERMARK, BACKGROUND DESIGNS, HOLOGRAM AND OTHER SECURITY FEATURES NOT LISTED AND DO EXCEED DOCUMENT SECURITY INDUSTRY GUIDELINES

October 16, 2025
IGI Report No 727566093
ROUND BRILLIANT

9.45 - 9.54 X 5.68 MM	3.08 CARATS	1	VVS 1	59.8%	57%	Thin To Medium (Faceted)	Polished	EXCELLENT	NONE	777567093
Carat Weight			Clarity Grade	Depth	Table	Grade	Culet	Symmetry	Fluorescence	Inscriptions(s)
Color Grade			Cut Grade				Polish			

Comments:
IDEAL CUT ROUND BRILLIANT