



**DIAMOND REPORT**

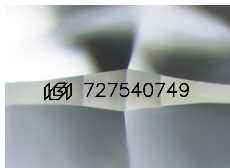
August 23, 2025  
IGI Report Number **727540749**  
Description **NATURAL DIAMOND**  
Shape and Cutting Style **ROUND BRILLIANT**  
Measurements **4.90 - 4.92 X 3.03 MM**

**GRADING RESULTS**

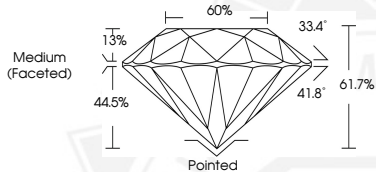
Carat Weight **0.45 CARAT**  
Color Grade **E**  
Clarity Grade **INTERNALLY FLAWLESS**  
Cut Grade **EXCELLENT**

**ADDITIONAL GRADING INFORMATION**

Polish **EXCELLENT**  
Symmetry **EXCELLENT**  
Fluorescence **VERY SLIGHT**  
Inscription(s) **(GSI) 727540749**



Sample Image Used



August 23, 2025  
IGI Report Number **727540749**  
**ROUND BRILLIANT**  
**NATURAL DIAMOND**  
**4.90 - 4.92 X 3.03 MM**  
Carat Weight **0.45 CARAT**  
Color Grade **E**  
Clarity Grade **I.F.**  
Cut Grade **EXCELLENT**  
Polish **EXCELLENT**  
Symmetry **EXCELLENT**  
Fluorescence **VERY SLIGHT**  
Inscription(s) **(GSI) 727540749**



August 23, 2025  
IGI Report Number **727540749**  
**ROUND BRILLIANT**  
**NATURAL DIAMOND**  
**4.90 - 4.92 X 3.03 MM**  
Carat Weight **0.45 CARAT**  
Color Grade **E**  
Clarity Grade **I.F.**  
Cut Grade **EXCELLENT**  
Polish **EXCELLENT**  
Symmetry **EXCELLENT**  
Fluorescence **VERY SLIGHT**  
Inscription(s) **(GSI) 727540749**



THIS DOCUMENT WAS PRODUCED WITH THE FOLLOWING SECURITY MEASURES: SPECIAL DOCUMENT PAPER, INK SCREENS, WATERMARK, BACKGROUND DESIGNS, HOLOGRAM AND OTHER SECURITY FEATURES NOT LISTED AND DO EXCEED DOCUMENT SECURITY INDUSTRY GUIDELINES.