



# INTERNATIONAL GEMOLOGICAL INSTITUTE

## DIAMOND REPORT

August 29, 2025

IGI Report Number

727539945

Description

NATURAL DIAMOND

Shape and Cutting Style

ROUND BRILLIANT

Measurements

4.66 - 4.71 X 2.96 MM

### GRADING RESULTS

Carat Weight

0.40 CARAT

Color Grade

I

Clarity Grade

SI 1

Cut Grade

EXCELLENT

### ADDITIONAL GRADING INFORMATION

Polish

EXCELLENT

Symmetry

EXCELLENT

Fluorescence

SLIGHT

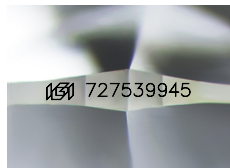
Identification Features

FEATHER, CRYSTAL, CLOUD, CAVITY

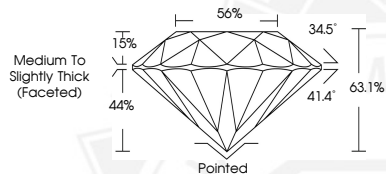
Inscription(s)

IGI 727539945

ELECTRONIC COPY



Sample Image Used



THIS DOCUMENT WAS PRODUCED WITH THE FOLLOWING SECURITY MEASURES: SPECIAL DOCUMENT PAPER, INK SCREENS, WATERMARK, BACKGROUND DESIGNS, HOLOGRAM AND OTHER SECURITY FEATURES NOT LISTED AND DO EXCEED DOCUMENT SECURITY INDUSTRY GUIDELINES.

For terms & conditions and to verify this report, please visit [www.igi.org](http://www.igi.org)



August 29, 2025

IGI Report Number 727539945

ROUND BRILLIANT

NATURAL DIAMOND

4.66 - 4.71 X 2.96 MM

Carat Weight 0.40 CARAT

Color Grade I

Clarity Grade SI 1

Cut Grade EXCELLENT

Polish EXCELLENT

Symmetry EXCELLENT

Fluorescence SLIGHT

Inscription(s) IGI 727539945



August 29, 2025

IGI Report Number 727539945

ROUND BRILLIANT

NATURAL DIAMOND

4.66 - 4.71 X 2.96 MM

Carat Weight 0.40 CARAT

Color Grade I

Clarity Grade SI 1

Cut Grade EXCELLENT

Polish EXCELLENT

Symmetry EXCELLENT

Fluorescence SLIGHT

Inscription(s) IGI 727539945